

Tuning the Source Four

Create hard edge

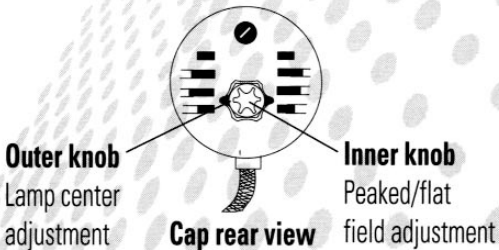
Adjust barrel.

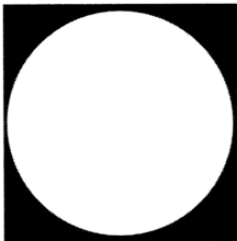
Center hot spot

Rotate outer knob clockwise until knob is tight.
Loosen knob until hot spot is centered in field.

Flatten field

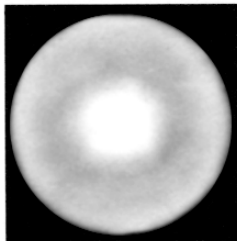
Rotate inner knob. A hot spot or hole appears in the field if the field is not aligned correctly.





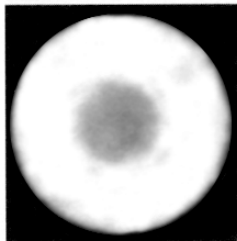
Flat Field

(Best alignment)



Hot Spot

(Lamp pulled out too far)



Field with hole

(Lamp pushed in too far)



International • 3030 Laura Lane, P.O. Box 620979, Middleton, WI 53562-0979
Tel: (+1) 608 831 4116 • Fax: (+1) 608 836 1736 • Toll free: 800 688 4116
Toll free fax: 800 555 8912

Europe • 5 Victoria Industrial Estate, Victoria Road, London W3 6UU
Tel: +44 (0)20 8896 1000 • Fax: +44 (0)20 8896 2000

Asia • Room 605-606, Tower III Enterprise Square • 9 Sheung Yuet Road,
Kowloon Bay • Kowloon, Hong Kong • Tel: (+852) 2799 1220 • Fax: (+852) 2799 9325

Web: www.etconnect.com • **Email:** mail@etconnect.com