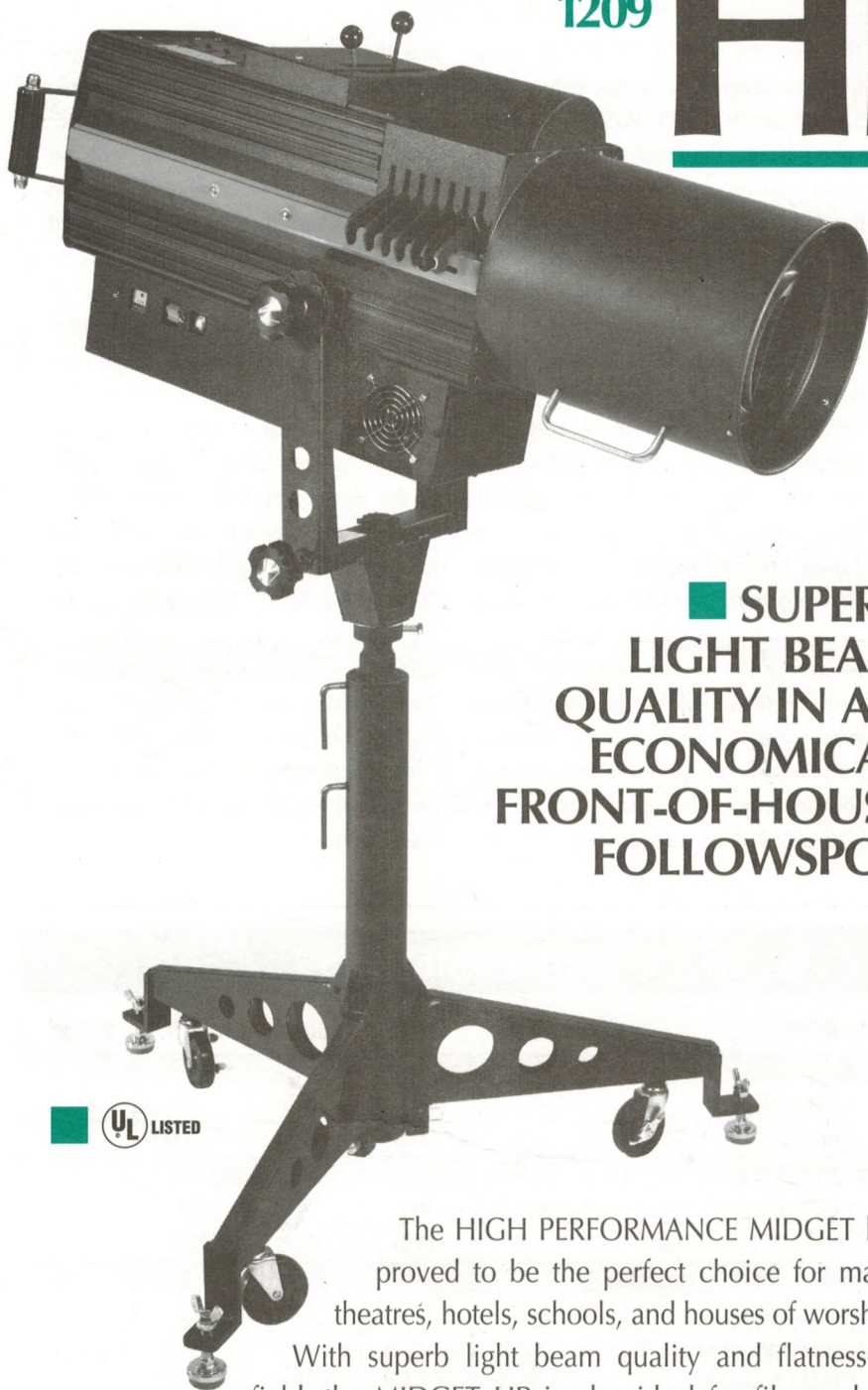


MIDGET

HP

■ MODEL
1209



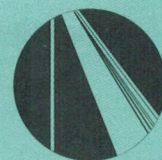
■ **SUPERB
LIGHT BEAM
QUALITY IN AN
ECONOMICAL
FRONT-OF-HOUSE
FOLLOWSPOT**

The HIGH PERFORMANCE MIDGET has proved to be the perfect choice for many theatres, hotels, schools, and houses of worship.

With superb light beam quality and flatness of field, the MIDGET HP is also ideal for film and TV shoots. Absolutely the highest ratio of light output for dollar input! An economical front-of-house followspot which provides that extra punch, previously attainable only with costlier units.

■ FEATURES

- Long life metal halide lamp
5600° K color temperature
- Automatic, self-cancelling
color boomerang
- Spread lens system
- Quiet operation
- Balanced for perfect weight
distribution at any angle
- Adjustable brakes for
pan and tilt
- Horizontal trim shutters
- Dowser
- Nichrome heavy duty iris
- Heavy guage cold rolled
steel and extruded
aluminum housing with
super hard-baked epoxy
finish
- Folding Base
- Easy lamp access
- Draws less than 9 amps
at 120 V.A.C.
- 120 V 60 Hz (240 V
50Hz optional)
- UL Listed

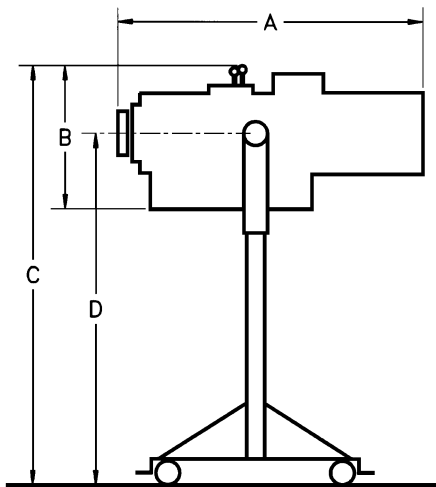


LYCIAN
STAGE LIGHTING

MIDGET HP

MODEL 1209

DIMENSIONS



A. Head length including all controls - 37"

B. Head height - 18"

*C. Overall height with base 55¹/₂"

*D. Height of pivot - 44"

*Additional upward height adjustment of 13"

- Width of base- 32"
- Width of head incl. all controls - 14"
- Head weight - 78 lbs.
- Base weight - 41 lbs.

ARCHITECTS' & ENGINEERS' SPECIFICATIONS

The luminaire shall be a 575 watt follow spotlight designed to accept only a MSR 575HR or HMI 575 W/SE type metal halide lamp. The field diameter of the beam shall be continuously variable from flood to spot by an internal heavy duty nichrome steel iris. A spread lens system shall be included to increase the width of the projected spot in the horizontal plane. A five color automatic boomerang plus a dowser shall be included. The unit shall include externally controlled, horizontal stainless steel trim shutters. Individually operated shutters shall not be acceptable. Lamp access shall be via a rear lamp drawer. External lamp axes "x" and "y" plus field adjustment shall be provided. Lamp focus with the lamp house open shall not be acceptable or necessary. The lamp shall be fitted with a double actuated safety switch to prevent lamp operation with the lamp house open. The unit shall contain only optical grade lenses. The luminaire shall be cooled by two fans such

that the unit will operate at the proper temperature. An approved power supply and ignitor shall be internally mounted. Extended (box) ballast shall not be acceptable. A circuit breaker, illuminated rocker "off/on" switch and line cord terminated in a NEMA-5-15P connector shall be provided. Housing shall be of extruded aluminum and cold rolled sheet steel. Housing dimensions shall not exceed 37"(L) x 14"(W) x 18"(H). Net weight for the floor stand shall not exceed 41 lbs. The floor stand assembly shall be of the telescoping three legged folding type and shall include both casters and leveling jacks. Allowable downward tilt is 70 degrees below horizontal and 40 degrees above horizontal. Current draw at 120V A/C shall not exceed 6.5 amperes. The luminaire shall be a Lycian Stage Lighting Midget HP, model 1209. The luminaire shall be UL listed and labeled for use with 575 watt HMI type metal halide lamp.

ORDERING CODE

■ 1209	Midget HP
■ 1209/HY	Midget HP with Hanging Yoke
■ 1209/240	Midget HP 240 volt
■ 1209/HY/240	Midget HP Hanging Yoke 240 volt

PHOTOMETRICS

THROW	40 ft.	60 ft.	100 ft.	140 ft.	200 ft.
SMALL SPOT					
Footcandles	906	403	145	74	36.1
Diameter (in.)	6.5	10.5	17.0	24.0	35.0
LARGE SPOT					
Footcandles	906	403	145	74	36.1
Diameter (ft.)	7.5	11.0	18.0	25.5	36.5
LARGE SPOT (SPREAD LENS)					
Footcandles	421	185	68	32	15
Max. width of beam (ft.) (Height x Width)	7.5 x 14.5	11.0 x 22.0	18.0 x 36.0	25.5 x 51.0	36.5 x 73.0



PO BOX D, KINGS HIGHWAY
SUGAR LOAF, NY • 10981-0214 • U.S.A.
PHONE: (914) 469-2285 • FAX: (914) 469-5355

All specifications subject to change. © 1996 Lycian Stage Lighting