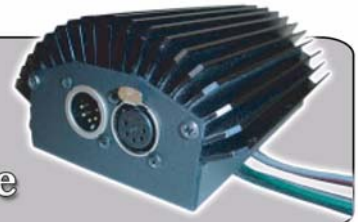


LIGHT PACK

IGBT Dimming Module Mounting Guide



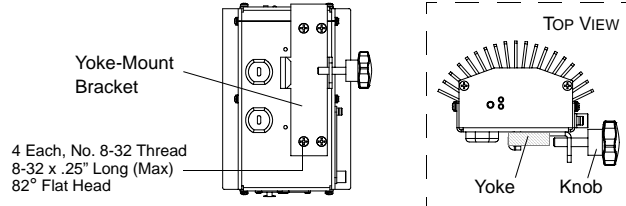
The Light Pack IGBT Dimming Module can be mounted in a variety of configurations. Depending on your requirements, choose one of the methods shown below. The module can be mounted vertically (recommended) or horizontally as required, however, to allow for optimum convection cooling, it CANNOT be mounted with the heatsink fins downward.



CAUTION: A safety cable is supplied with the Yoke and Pipe mounts. The safety cable must be secured to the fixture or structure and may be required by local codes.

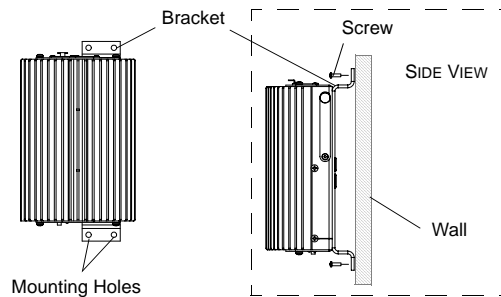
Yoke Mount (strand #71340)

- Step 1. Attach yoke-mount bracket to Light Pack module.
- Step 2. Fit bracket onto fixture yoke.
- Step 3. Tighten threaded attachment knob to secure in place.
- Step 4. Install safety cable securely to fixture or structure.



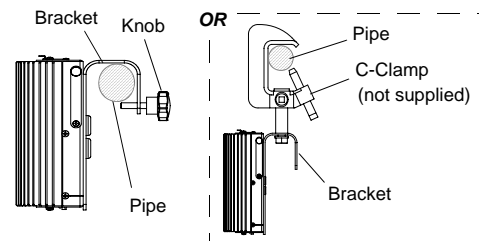
Wall Mount (Strand #71341)

- Step 1. Attach wall-mount bracket to Light Pack module.
- Step 2. At wall, locate suitable installation position.
- Step 3. Using Light Pack mounting bracket as template, mark holes for drilling.
- Step 4. Drill mounting holes and secure Light Pack module to wall.



Pipe Mount (Strand #71342)

- Step 1. Attach threaded knob or C-clamp (not supplied) to Light Pack mounting bracket.
- Step 2. Fit bracket over pipe*.
- Step 3. Tighten knob (or clamp) to secure in place.
- Step 4. Install safety cable securely around pipe or structure.



* Mounts to 1.5" Schedule 40 pipe or 2" aluminum tube truss.

2 YEAR LIMITED WARRANTY

Strand Lighting warrants that this product will be free from defects in workmanship or materials. This warranty is void on any electronic controls which have been overloaded, abused, improperly installed or altered in any manner.

Strand Lighting's sole obligation will be at its option to repair or replace any electronic controls product proven defective if it is returned, postage prepaid, to Strand Lighting, 10911 Petal Street, Dallas, Texas 75238 USA. Strand Lighting will not pay for any charge-back or charge for labor or material that does not have its prior written approval.

This warranty shall be in lieu of any other warranty, express or implied, including but not limited to any implied warranty of merchantability or fitness for a particular purpose. Some states do not allow limitations on how long an implied warranty lasts and do not allow the exclusion or limitation of incidental or consequential damages, so the above limitation or exclusions may not apply to you. This warranty gives you specific legal rights, and you may also have other rights, which vary from state to state. Exchange of products covered by warranty should be handled through your original supply source.

Light Pack IGBT Dimming Module Mounting Guide | Document Number: 85-6230 | Version as of 21 June 2011

Strand Lighting

10911 Petal Street
Dallas, Texas 75238
1-214-647-7880 main
1-214-647-8031 fax

For technical/sales assistance call:

1-214-647-7880

www.strandlighting.com
©2011 Philips Group