

ETC Setup Guide

Response Four-Port DIN Rail Mounted Gateway

Overview

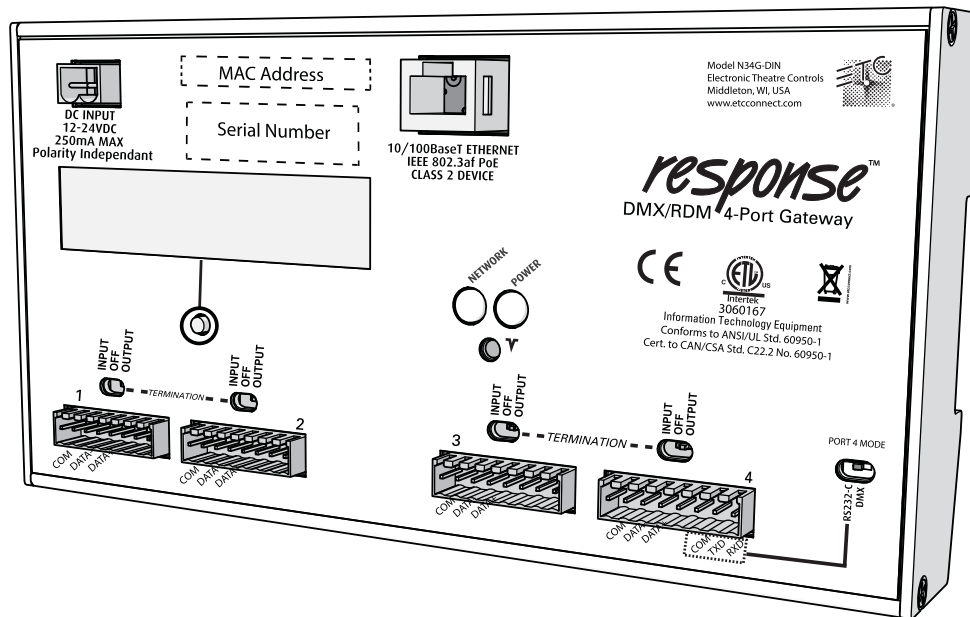
The DMX/RDM Four-Port DIN Rail Mounted Gateway is a network data distribution device for lighting systems that supports protocols including Net3 (sACN), DMX, and Remote Device Management (RDM). It mounts to standard 35mm symmetric DIN rail.

For information on the portable Four-Port Gateway, see the Four-Port Gateway Setup Guide. All ETC documentation is available for download on our website at www.etcconnect.com.



Note: *Network wiring should be installed and terminated by a qualified network installer and follow standard Ethernet wiring practice.*

Configuration for DMX/RDM gateways is performed using NET3 Concert Software. The latest version of this software is available on www.etcconnect.com and includes an in-depth help system. All DMX/RDM gateways are powered by 802.3af Power over Ethernet (PoE) or 12-24VDC power.



Corporate Headquarters ■ Middleton, WI, USA ■ Tel +608 831 4116 ■ Service: (Americas) service@etcconnect.com

London, UK ■ Tel +44 (0)20 8896 1000 ■ Service: (UK) service@etceurope.com

Rome, IT ■ Tel +39 (06) 32 111 683 ■ Service: (UK) service@etceurope.com

Holzkirchen, DE ■ Tel +49 (80 24) 47 00-0 ■ Service: (DE) techserv-hoki@etcconnect.com

Hong Kong ■ Tel +852 2799 1220 ■ Service: (Asia) service@etcasia.com

Web: etcconnect.com ■ © 2017 Electronic Theatre Controls, Inc.

Product information and specifications subject to change. ETC intends this document to be provided in its entirety.

4260M2220 ■ Rev B ■ Released 2017-03

ETC Setup Guide

Four-Port DIN Rail Mounted Gateway

Installation and Removal

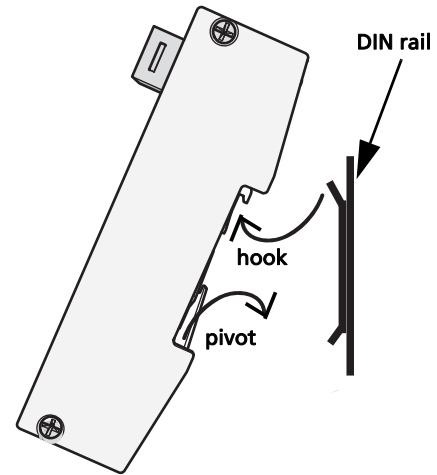
Installing the DIN Rail Enclosure

The DIN rail mounted Four-Port gateway kit consists of the gateway, a Cat5 termination kit, and four DMX termination kits. Additional information on these termination kits ships with the kit, or can be downloaded from ETC's website.

Using DMX over Cat5 cable will require the use of additional Cat5 termination kits which are not included. Contact ETC and request a qty. of 4, part# 4100A1013.

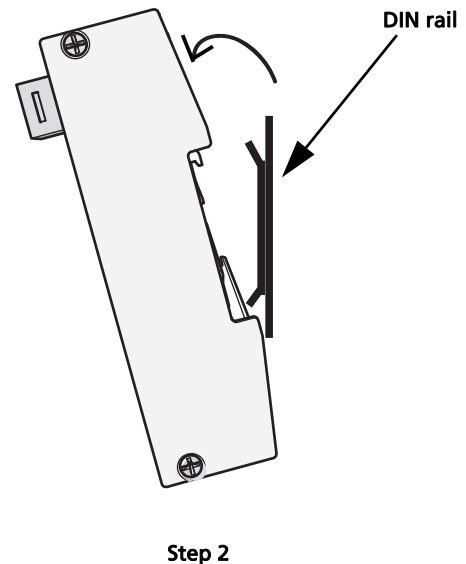
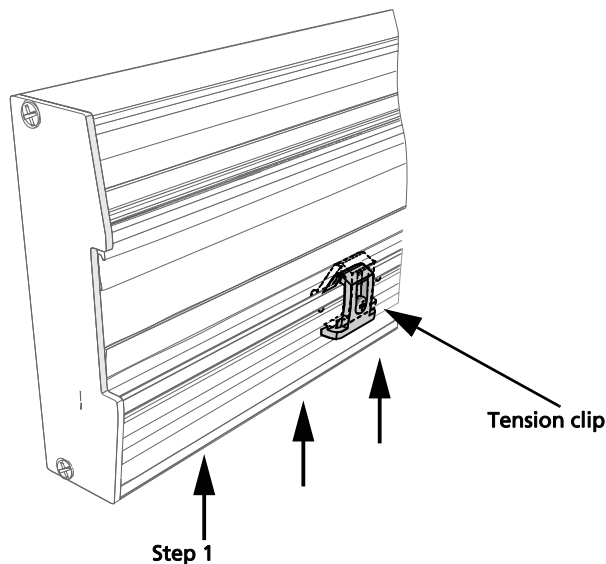
To install the gateway:

- 1: Ensure the section of DIN rail to be used is mounted securely.
- 2: Hook the top of the gateway over the top of the DIN rail as shown.
- 3: Pivot the gateway downward until it is seated securely on the DIN rail.
- 4: Step 4: Terminate the bare end of the Cat5 wire using the provided termination kit and plug it into the connector on the front of the gateway.
- 5: Terminate the DMX wires using the provided termination kits and plug them into the DMX connectors on the front of the gateway.



To remove the gateway from the DIN rail:

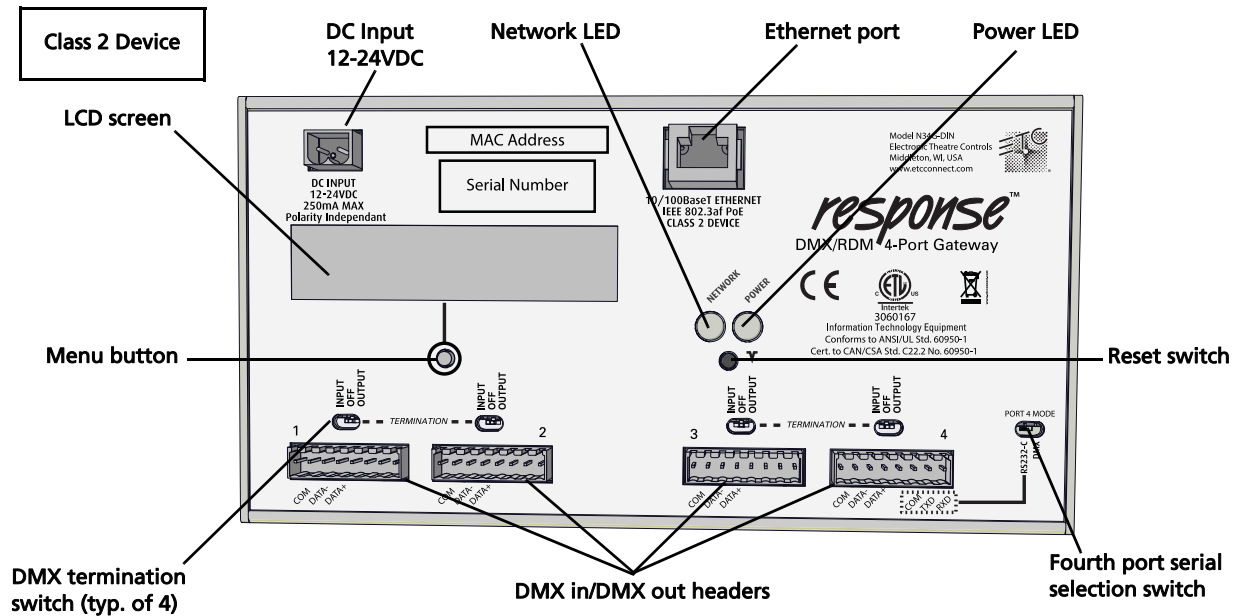
- 1: Use both thumbs to push up firmly on the bottom of the mounted gateway. This will disengage the tension clips on the rear of the gateway housing.
- 2: Rock the top of the gateway forward and off of the DIN rail.



ETC Setup Guide

Four-Port DIN Rail Mounted Gateway

Setup



LCD Display

The Four-Port gateway includes a 2x20 character front panel display.

- Use the single Menu button below the screen to access the user interface menus.
- Press the Menu button repeatedly to cycle through the informational data.
- On certain menu items you are prompted to press and hold the Menu button for five seconds to change a state or switch between operating modes.

DMX Universe numbers up to 999 are displayed on the front panel. Universes that are higher than 999 or flexibly patched outputs are indicated by "...". Navigate to the port screen to see full details.

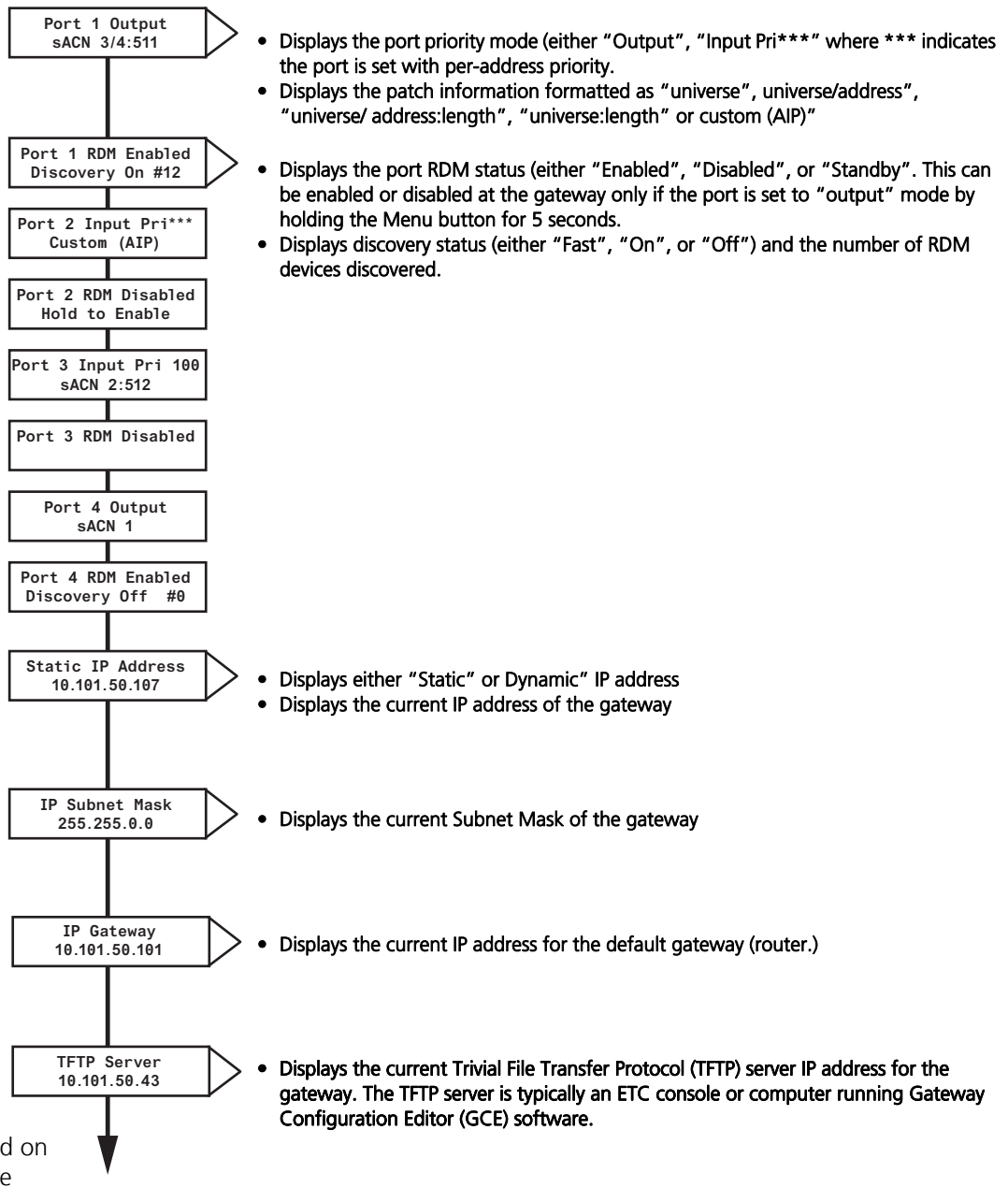
The unit displays either the "gateway name" or the IP address as well as each port and its port status. Included in the port status are the following indicators:

- An arrow directed toward the number indicates an input (999←)
- An arrow directed away from the number indicates an output (999→)
- An X indicates the universe port is disabled
- A dimmer doubled port displays only "DD". Go to the port screen to see full details.
- When a port is set to download mode, "DNLD" displays
- AIP inputs are indicated as "AIP"
- A port will blink on the display when it does not have DMX connected (input) or has no valid source data (outputs)

ETC Setup Guide

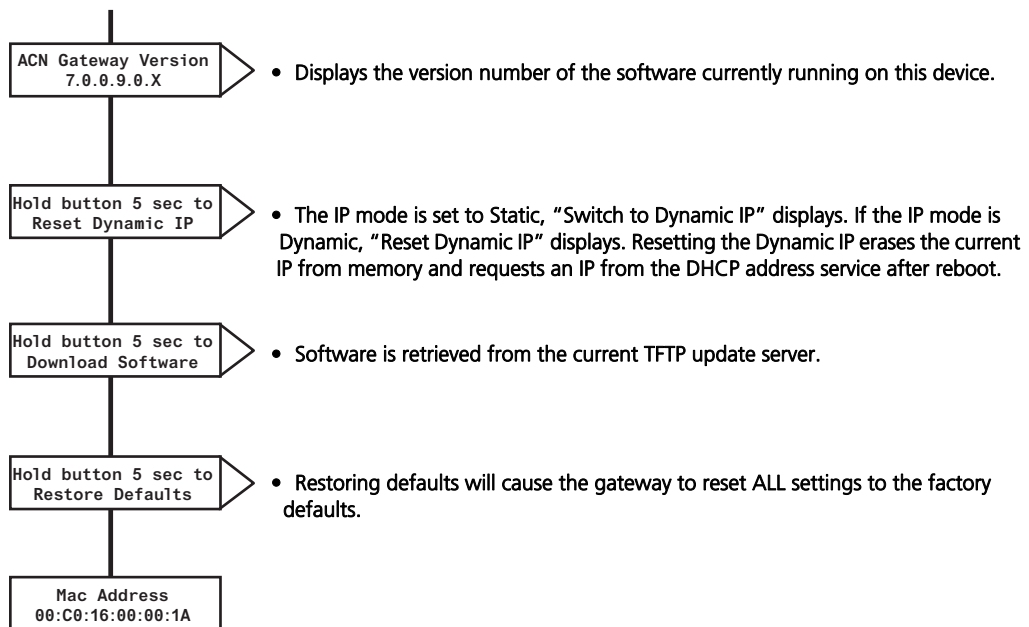
Four-Port DIN Rail Mounted Gateway

Menu Structure



ETC Setup Guide

Four-Port DIN Rail Mounted Gateway



Status and Feedback LEDs

Once properly connected to the network, the LEDs will provide the following feedback.

Power LED

- A constant blue LED indicates power to the gateway

Network LED

- A constant green LED indicates a valid network connection is present.
- The LED will flicker with network traffic.

Configuration and Termination

After the gateway has been securely mounted, each individual port can be assigned using Net3 Concert software to function as either DMX input or DMX output.

Above each DMX port header is a termination switch. The termination switch must be set according to the configuration of the port and the position in the DMX chain.

- If the port is configured to be an output, the switch should be set to "OUTPUT." This is the default.
- If the port is configured to be an input, AND is at the end of the DMX chain, the switch should be set to "INPUT."
- If the port is configured to be an input, and is NOT at the end of the DMX chain, the switch should be set to "OFF."



Note: *For gateways running software updated to v7.0.0 or later, you can set the fourth port for serial output by setting the alternate serial termination switch to RS232-C. The serial output is configured using the NET3 Concert application.*
