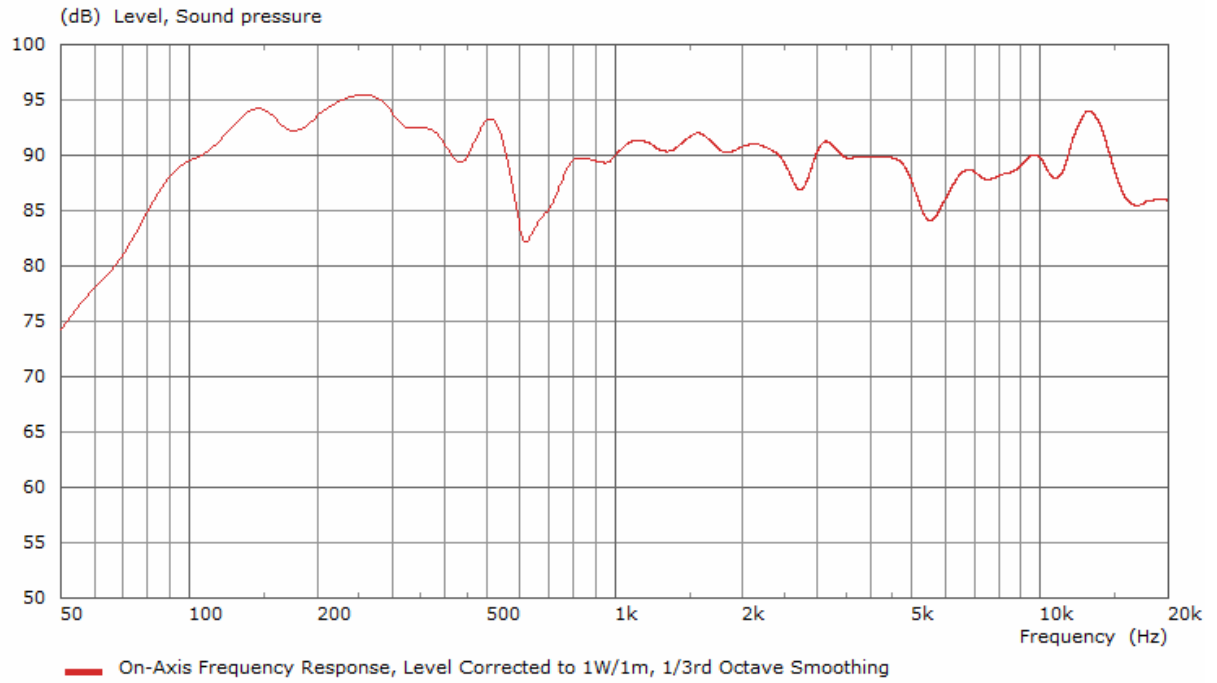
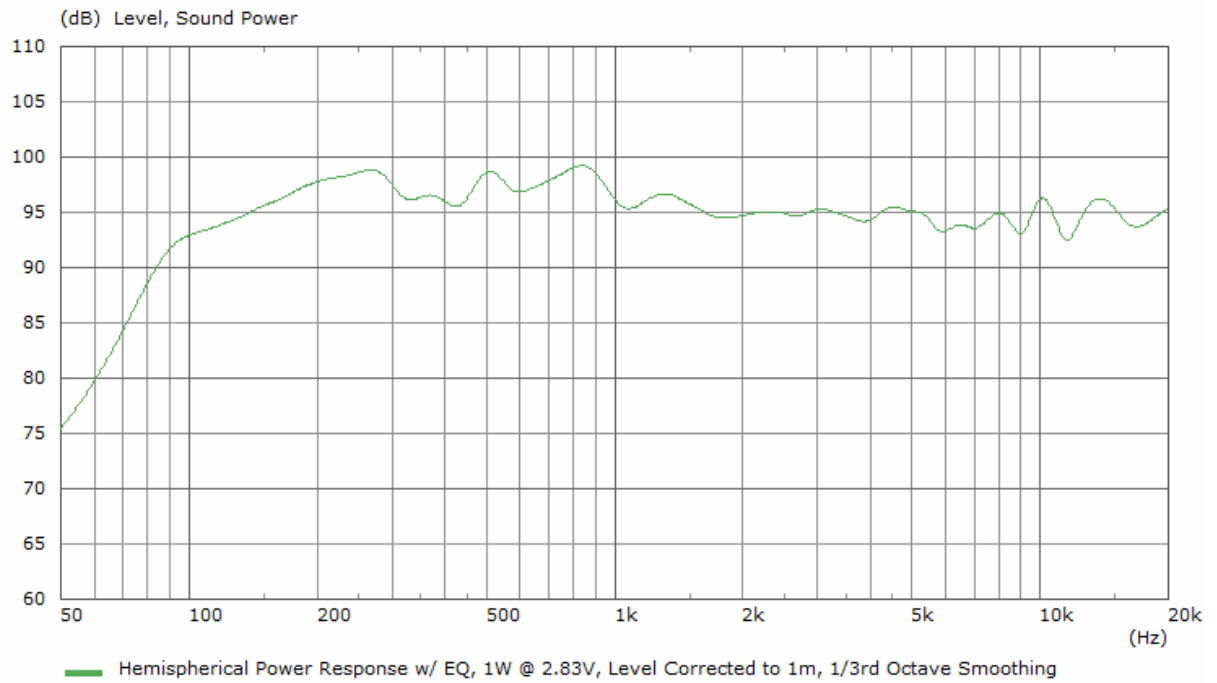


DML500, pole mounted, with suggested EQ in anechoic chamber. All measurements 1/3rd octave smoothed.

On Axis Response



Hemispherical power response



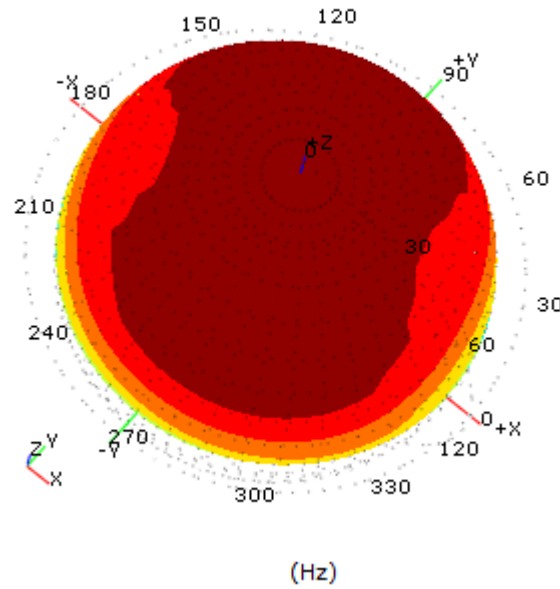
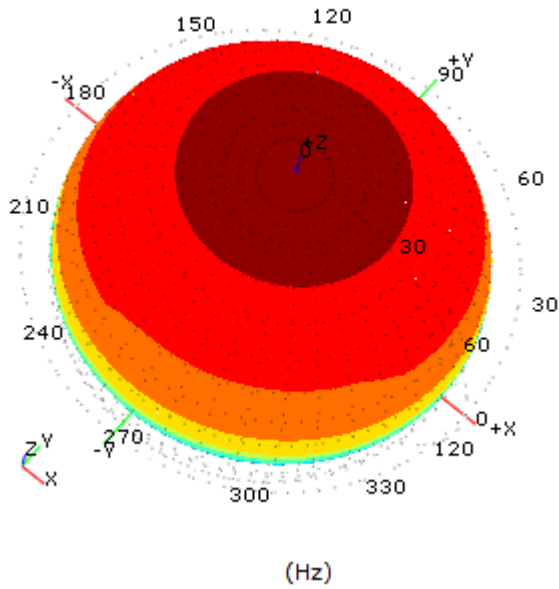
Radiation Balloon Plots

Sound pressure
Level (dB)

Parameter
150 Hz

Sound pressure
Level (dB)

Parameter
500 Hz

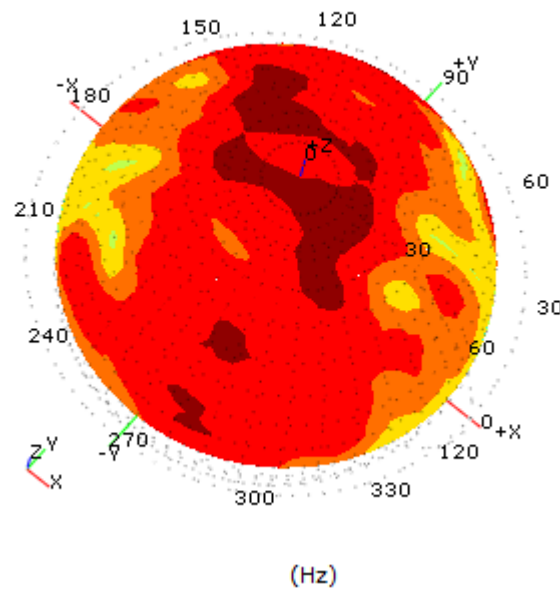
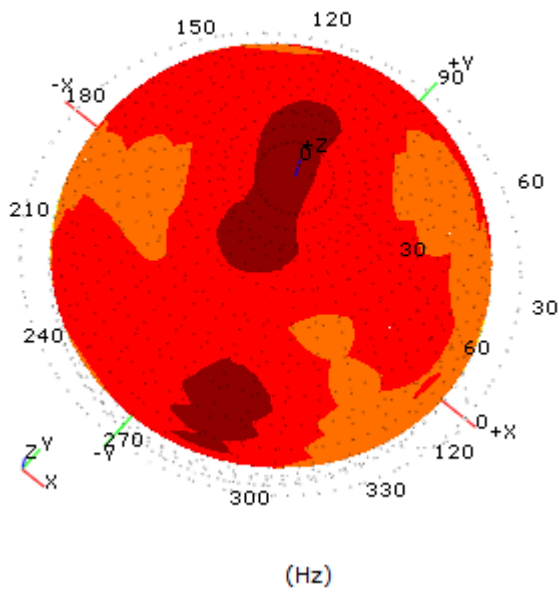


Sound pressure
Level (dB)

Parameter
1.5 kHz

Sound pressure
Level (dB)

Parameter
3 kHz

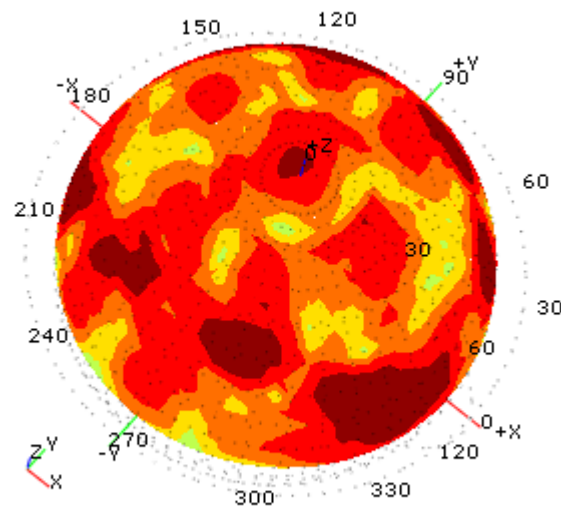
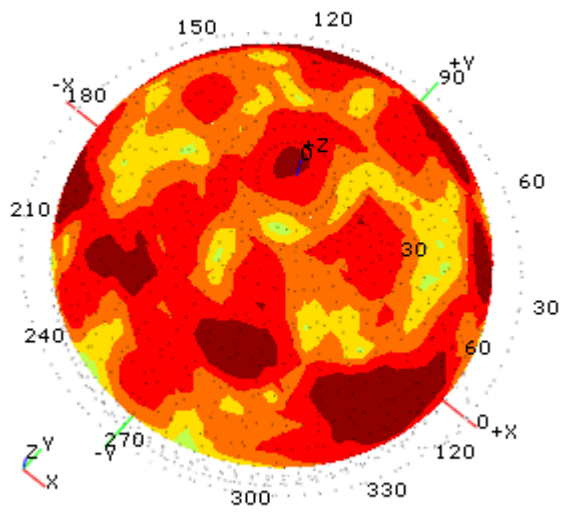


Sound pressure Level (dB)

Parameter 10 kHz

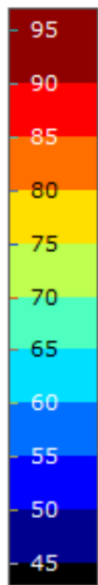
Sound pressure Level (dB)

Parameter 10 kHz



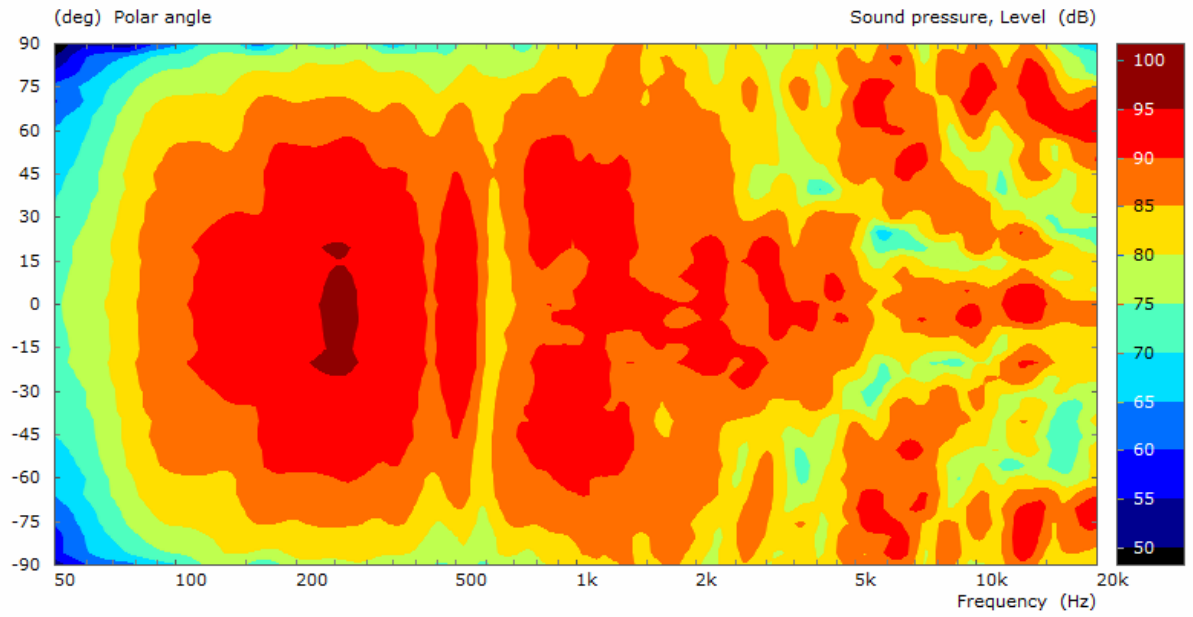
(Hz)

(Hz)



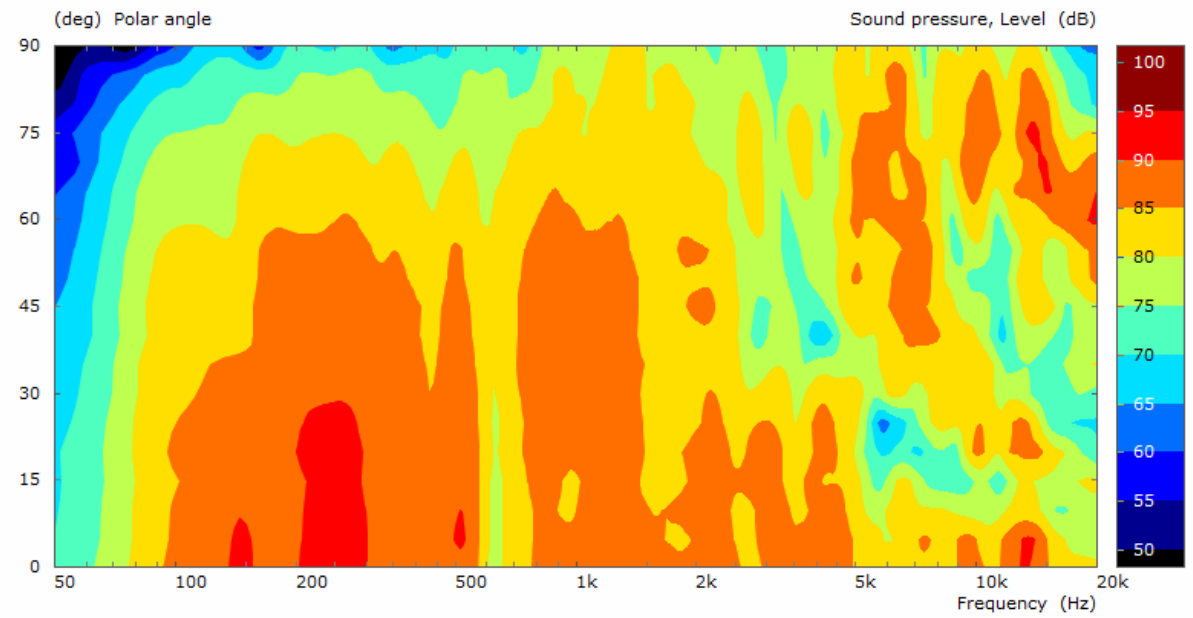
← Scale for all hemispheres above if needed.

Hemispherical Contour Plot

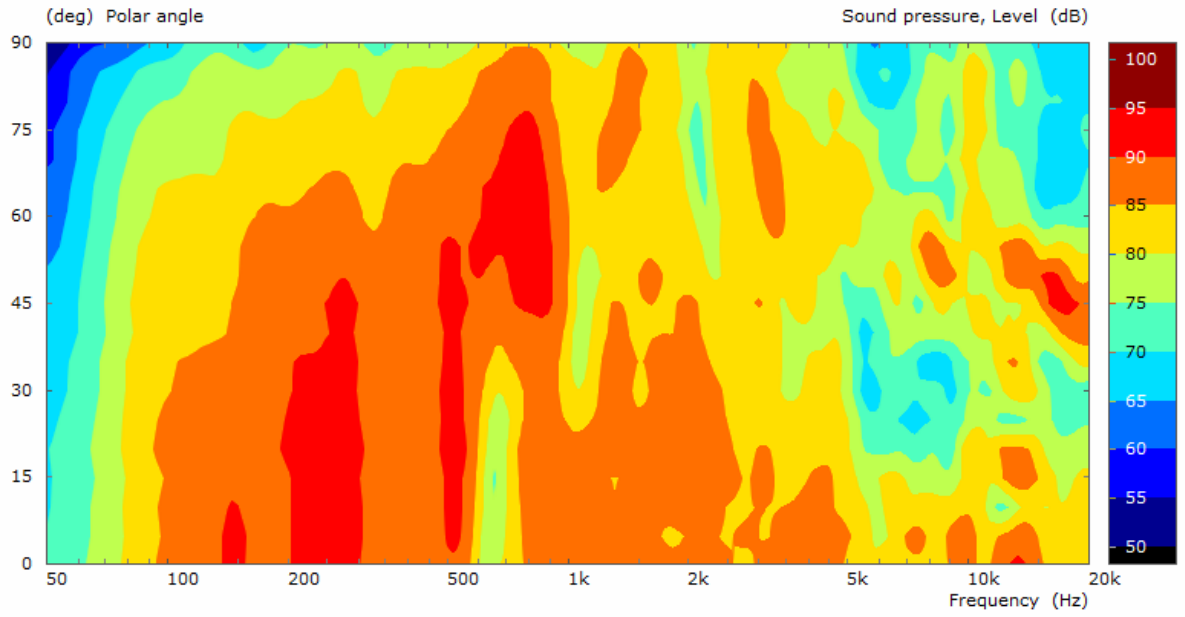


$\pm 90^\circ$ of DML500 across long axis

Standard Contour Plots

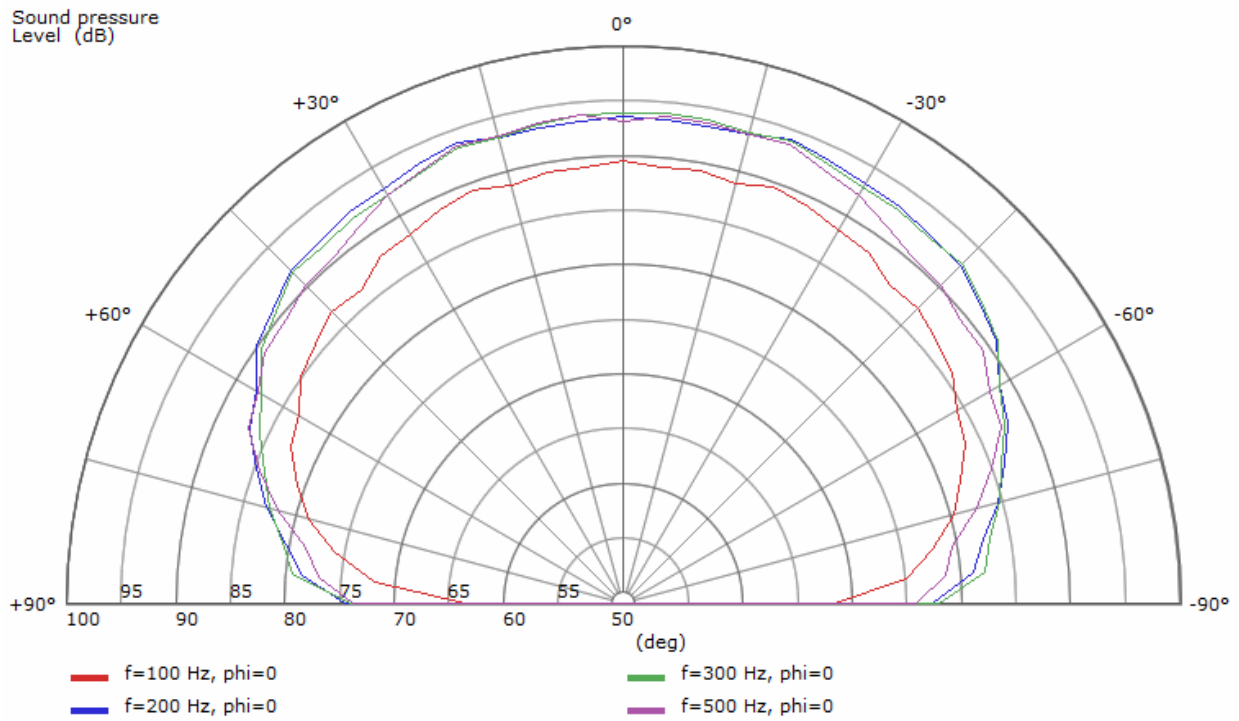


0° - 90° across short axis

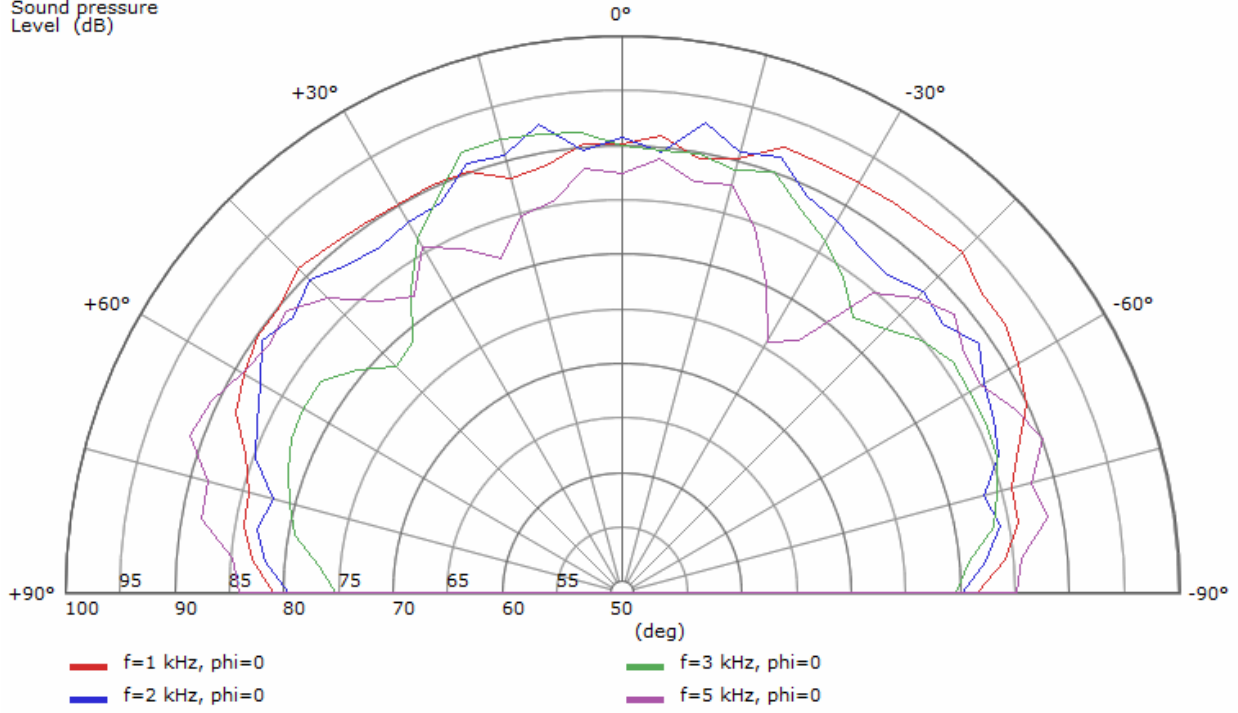


0°-90° across long axis

Polar Plots



Sound pressure Level (dB)



#

Sound pressure Level (dB)

