

Ben Nye

CELEBRATING BEN NYE'S 45TH ANNIVERSARY



Dana Nye, President

Our Pro Artist Catalog offers stunning new colors, versatile palettes and HD textures for today's global artistry.

It is all designed for you!

In our new production facilities, our talented chemists expanded and improved the professional line designed by 20th Century Fox Makeup Director, Ben Nye, Sr. We are one of a few family-owned professional makeup companies in the world. Our new colors and products are produced in Los Angeles.

Makeup artists are excited about the *MediaPRO*® Collection. It features a satin-smooth, HD compliant texture to address multi-ethnic skin tones. *Sheer Foundations*, *Concealer/Adjusters*, and *Creme Contours* are ultra-light and buildable for a flawless, natural finish.

MediaPRO performs perfectly for film, fashion, bridal, opera, and ballet. Artists like its big stage vibrancy with hi-def intimacy. *MediaPRO Palettes* put every artist in complete control.

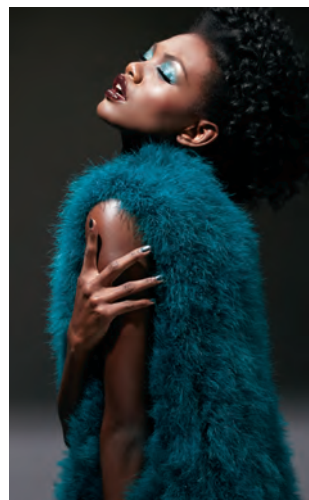
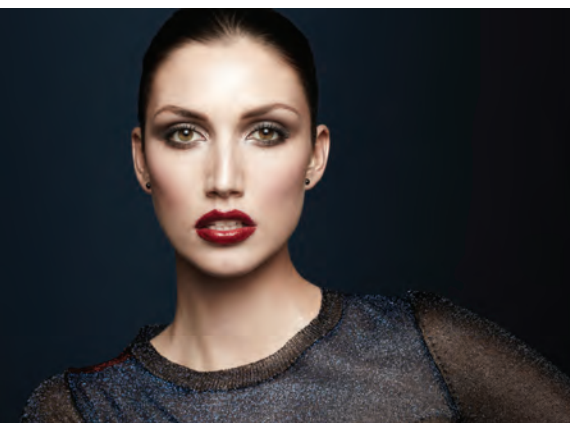
Matte HD Foundations feature a light-weight texture with full, buildable coverage. The collection includes 84 attractive and natural shades including new *Bamboo* and *Mojave Series* in olive and golden-brown hues.

F/X Colors are redesigned to provide an exceptional, realistic appearance with new shades including: *Vein*, *Bruise*, *Dried Blood*, *Dark Crimson*, *Black* and *Blue*. In all, 26 shades produce a life-like "in the skin" finish. The *Ultimate F/X Palette* offers you an artistic advantage with 18 unique shades. (See *F/X Palette* to the left.)

There is more that meets the eye with our 23 beautiful new *Eye Shadows* and *Powder Rouges*, 10 new refillable *Pressed Powder Palettes*, and *Creme Stackables*. There are also new *Lip Pencils*, *Lipsticks*, and brilliant smudge-proof *Shimmer Crayons* and more.

It is a joy to create makeup for the world's most talented artists. I appreciate the reviews by makeup artists who like our new *MediaPRO* Collection. I look forward to meeting you at future makeup exhibitions. Look to our website for the latest news at Ben Nye.

Wherever you are in the world, it is our pleasure to serve you.



- 2** MediaPRO® Sheer Foundations & Palette
- 3** MediaPRO Creme Contours & Palette
- 4** MediaPRO Concealers, DuraCovers & Palettes
- 5** MediaPRO Mojave Adjusters, Neutralizing Wheels & Crayons
- 6** MediaPRO Poudre Compacts, Luxury Powders, Matte HD Powder
- 8** Color Cake Foundation
- 9** Matte HD Foundations & Palettes
- 10** Powder Rouges & Palettes
- 12** Eye Shadows & Palettes
- 13** MediaPRO Eye Definer, Eye Liners, Mascara & Pencils
- 14** Lip Colour Pencils, Lip Palettes & Gloss
- 15** Lipsticks
- 16** Lumière Grande Colours, Palettes & Pearl Sheen
- 17** Lumière Creme Colors & Palettes, Shimmer Crayons & Fireworks
- 18** Lumière Luxe, Luxe Sparkle & Ultra Bright Powders
- 19** Sparklers, Aqua Glitter, Glitter Glue & Glitz It
- 20** MagiCake® and MagiColor® Face & Body Paints, Crayons & Pencils
- 21** Sealers, Cleansers & Removers
- 22** Creme Foundations & Clown White
- 23** Creme Colors & Pro Foundations
- 24** F/X Creme Colors, Stacks, Palette & Face Powders
- 25** F/X Wheels & Pro Wheels
- 26** Latex, Wax & Adhesives
- 27** Colors for Hair, Teeth & Body
- 28** Blood & Character Effects
- 29** Moulage Kits
- 30** Theatrical Creme & Cake Kits
- 31** Personal Kit, Production Kit & Instructional DVD
- 32** Professional Brushes, Applicators & Tools



Special Note: Some products not shown in the catalog are listed in our current Order Form and on our Website.

MediaPRO® is Ben Nye's global makeup collection for film, fashion, bridal, theatre and HD broadcast.

Our Sheer Foundations, Contours and Concealers share a light-weight, buildable formula that blends to a flawless finish.

The MediaPRO color palette includes beautiful classics and new multi-ethnic shades in Sheer Foundations, Creme Contours, Concealers and Powders.



Sheer Foundation

Our silky formula is well balanced and designed for all complexions in forty-three shades. Its moist, light texture blends smoothly and evenly, and layers seamlessly for more opacity with a minimum of makeup. Set lightly with *HD Matte Powder*, *Luxury Powder* or *MediaPRO Poudre Compact*. Expect 40-100 applications. HD .63oz./18gm.



Sheer Foundation Palette

MediaPRO Sheer Foundation Palette contains 18 global shades for fair, olive and brown complexions. Blend and layer one or more shades for a natural, matte finish. Perfect for all media including film, fashion, bridal and TV. Expect 75-300 applications.

HDFF-1 Net Weight 1.5oz./42gm. Shades (by row L-R), Top: HD-301, 204, 001, 307, 504, 491; **Center:** 510, 313, 401, 419, 002, 004; **Bottom:** 493, 520, 904, 910, 916, 922



Mary is wearing HD-517 Pale Biscotte Sheer Foundation.

HD-010 Bella 010	HD-001 Bella 001	HD-002 Bella 002	HD-003 Bella 003	HD-004 Bella 004	HD-201 Pure Ivory	HD-204 Ultra Beige	HD-207 Olive Fair	HD-210 Natural Fair	HD-301 Special White	HD-304 Ciné Fair	HD-307 Ciné Lt. Light	HD-310 Ciné Beige	HD-313 Ciné Tan
HD-401 Natural Beige	HD-404 True Olive 1	HD-407 True Olive 2	HD-410 True Olive 3	HD-413 True Olive 4	HD-416 Beige Natural 2	HD-419 Beige Natural 3	HD-491 Bamboo 1	HD-493 Bamboo 3	HD-501 Shinsei Ivory	HD-504 Shinsei Fairest	HD-505 Shinsei Fair	HD-507 Shinsei Medium	HD-510 Shinsei Deep
HD-513 Almond	HD-516 Pecan	HD-517 Pale Biscotte	HD-519 Brûlée	HD-520 Soft Caramel	HD-522 Tan Brûlée	HD-901 Tan Au Lait	HD-904 Au Lait	HD-907 Rio Tan	HD-910 Sumatra	HD-913 Rich Cocoa	HD-916 Espresso	HD-919 Semi-Sweet	HD-922 Coco Soufflé

HD-918 Brown Suede not shown on Color Chart.



Creme Contour Palette

Make a fashion statement with our incomparable ensemble of *Creme Highlights*, *Shadows*, *Blush* and *Ultra Contours*.

Expect 200-750 applications. HDCCP-1

Net Weight 1.5oz./42gm.

Shades (L-R), Top: MCH-05, 03, 09, 15, MCS-01, 05; Center: MCB-17, 15, 09, 01, 05, 03; Bottom: MCS-07, MUC-05, 01, 03, MCB-11, MUC-09.

Creme Blush Wheel

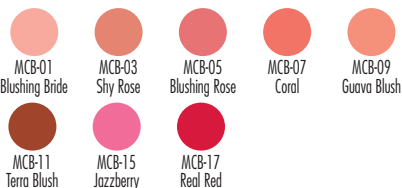
Inspired by professional artists, our *Creme Blush Wheel* offers six beautiful shades, from natural to vibrant. Colors are formulated in our silky *MediaPRO* formula for buildable, easy-to-blend texture. Expect 50-200 applications. CR-100 1oz./28gm.

Shades (clockwise from top left): CR-0, CR-4, CR-7, CR-3, CL-13, CR-2 (C).



Creme Blush

MediaPRO Blush offers refined hues in a micro-smooth texture that apply and blend effortlessly. Long-wearing colors from soft and natural, to intensely dramatic. Expect 30-100 applications. MCB .28oz./8gm.



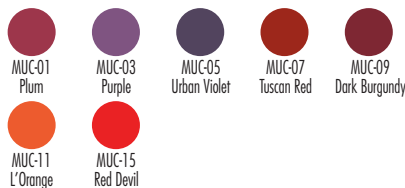
Creme Highlights

Silky-smooth *Creme Highlights* subtly accent the face for light-catching beauty. Accentuate cheeks, brows, nose and collar bone to add radiance and emphasize focus. *Almond*, *Camel* and *Light Caramel* highlight deep olive to brown complexions. Expect 30-100 applications. MCH .28oz./8gm.



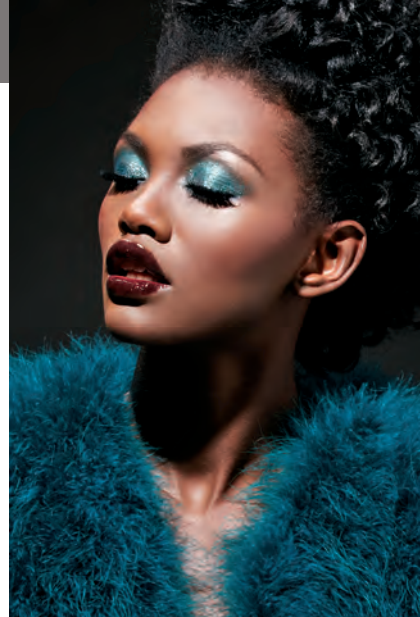
Ultra Contours

Pump up the volume with this array of fashion-forward shades. Colors are exceptional for contouring brown skin tones, or any design that requires extraordinary color. Expect 30-100 applications. MUC .28oz./8gm.



Creme Shadows

Professional artists know the secrets of subtle shadowing. A touch of shadow defines contours along cheeks, nose or jawline. *MediaPRO* base blends perfectly with *Sheer* or *Matte Foundations* for a natural finish. Expect 30-100 applications. MCS .28oz./8gm.



Milan is wearing MUC-03 Purple and MUC-09 Dark Burgundy.

MediaPRO® Concealers, DuraCovers and Mojave Adjusters create flawless complexions utilizing low luster, micronized pigments for a natural finish.

One artist said, "MediaPRO formulas exceeded all expectations!"

All offer exceptional coverage to conceal birthmarks, under-eye discoloration, facial blemishes or body art.



Classic Neutralizers & Concealers

Ben Nye, Sr. pioneered cover-ups, such as *Mellow Yellow®*, *Blue Neutralizer* and *Coverette®*, that have become essential to artists all over world. Formulated with new *MediaPRO* base for maximum coverage. Expect 50-200 applications. .3oz./8.5gm. See Color Chart at bottom of page.



Neutralizer Stack

This five-color stack includes Ben Nye's most popular neutralizers, such as *Mellow Yellow*, to cover redness, plus four additional full-sized shades to disguise and blend away face and body imperfections.

Expect 300-1000 applications.

NKS-5 Net Wt. 1.5oz./42gm.

Shades: CC-1, MY-1, MY-2, NB-3, NT-2.



DuraCover

The new *DuraCover Series* offers exceptional colors to camouflage birthmarks, body art and skin discolorations. Concentrated pigmentation blends and builds to a silky, long-wearing finish. Powder lightly to set with *Poudre Compact*, *HD Matte* or *Luxury Powders*. Expect 50-200 applications. DV .3oz./8.5gm.



DuraCover Stack

Instantly disguise the most intense discolorations, such as tattoos and Vitiligo, with our practical stack of five pigment-rich *DuraCovers*. Expect 300-1000 applications. DVS-5 Net Wt. 1.5oz./42gm. Shades: DV-30, 40, 50, 130, 320.



Concealer Palette

Rely on these twelve indispensable shades to eliminate blemishes and discolorations. Ideal for bridal and print, and a necessity for the artist who wants to be prepared for anything.

All palette shades are refillable.

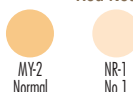
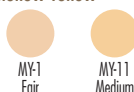
Includes *DB-8 Dome Brush*. Expect 400-1200 applications.

NKP-12 Net Wt. 1.69oz./48gm. Shades (by row L-R): Top: RMY-1, RMY-2, RCC-2, RCC-3, RMO-2, RFS-1; Bottom: RHY-1, RGC-1, RNR-2, RNT-1, RNT-2, RNB-1.

® Refills available in Palette shades.



Mellow Yellow®



Red Neutralizers



Coverette®



Green Concealer



Yellow Highlight



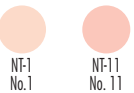
Mellow Orange®



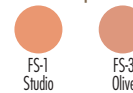
Blue Neutralizers



Tattoo Cover



Five O'Sharp®



Concealer & Adjuster Palette

We assembled our best highlights, concealers, adjusters and correctors so you can get the job done perfectly. *Palette* includes favorites, such as *Mellow Yellow*, *Tattoo Cover*, new maximum coverage *DuraCovers* and *Mojave Adjusters*. Silky texture blends to a natural, matte finish.

Requires minimal powder. Expect 300-1000 applications. HDAP-1 Net Wt.

1.5oz./42gm. Shades (by row L-R), Top: CC-0, GC-1, MY-2, NT-1, NT-11, DV-320; Center: CC-1, NT-2, NB-1, NB-2, FS-1, SC-18; Bottom: HY-1, SC-8, SC-3, SC-9, SC-10, SC-12.



Mojave Adjusters

A rich palette of radiant hues to adjust base and contours, especially suited for olive to brown complexions. Use these distinct hues to cover discoloration, correct a base tone to an individual's own complexion or to cover uneven skin tones. Expect 50-200 applications. SC .3oz./8.5gm.

Mojave Adjuster Stack

Our *Mojave Stack* combines five useful shades for highlighting, correcting, neutralizing and contouring brown skin tones.

Expect 300-1000 applications. SC-5 Net Wt. 1.5oz./42gm. Shades: SC-3, 6, 8, 12, 16.



Creme Neutralizing Crayons

Inspired by our concealer classics, such as *Mellow Yellow* and *Red Neutralizer*, *Crayons* have a silky texture with durable coverage. Sharpen with *Dual Hole Sharpener (DP)*. Expect 50-150 applications. NP .09oz./2.5gm. - .1oz./2.8gm.



Concealer Wheels

Concealers fit in the palm of your hand in compact four-color or economical six-color *Wheels*. All are now formulated in the *MediaPRO* formula for a flawless natural finish that needs little powder.

Expect 125-300 applications per Six-Color Wheel Net Wt. 1oz./28gm.

Expect 75-200 applications per Four-Color Wheel Net Wt. .5oz./14gm.

(Shades noted clockwise from upper left.)



NK-11 Total Conceal-All
NB-1, MY-2, NT-1,
NB-3, NR-1, GC-1 (C)



SK-100 Total Cover-All
MY-1, MO-2, CC-1,
MY-2, MO-11, NT-1 (C)



SK-200 Total Cover-All II
CC-1, HY-1, NT-1,
CC-2, GC-1, CH-0 (C)



NK-1 Conceal-All
NB-1, NT-2, NB-2, NR-1



SK-1 Cover-All
CC-3, MO-2, NR-2, MY-2



SK-11 Tattoo Cover
NT-2, MY-2, NB-4, CC-1



SK-2 Highlight
CH-2, CH-0, CH-5, CH-01



SK-3 Shadow
CS-3, CL-11, CS-4, CS-21



CSK-31 Mojave
SC-16, SC-8, CS-6, SC-4



Bella, Mojave and Contour Poudre Compacts

Poudre Compact Powders are ultra-light and micro-milled for a matte, satiny finish. Apply *Bella* and *Mojave* Series to set *Sheer* or *Matte HD Foundation* or as a touch-up to eliminate shine. *Bella* includes classic beiges, *Banana* and *Colorless*. *Mojave* offers warm and golden-brown hues. Apply *Contours* for dramatic shading details.

Expect 100-350 applications. HDC and MHC .63oz./18gm.



HD Matte Powder

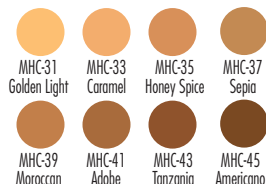
Naturally transparent *HD Matte Powder* feels light as air. Just a dusting will set *Sheer* and *Matte Foundations* or similar bases.

Expect 50-100 applications. HDP-1 .32oz./9gm.

BELLA POUDRE COMPACTS



MOJAVE POUDRE COMPACTS



CONTOURS



Bella Poudre Palette

Indispensable for bridal, fashion, film or HD broadcast. Includes delicate shades for fair and olive skin tones. Expect 200-800 applications. HDCP-8 Net Wt. 1oz./28gm. Shades (by row L-R), Top: RHDC-00, 010, 001, 002; Bottom: RHDC-003, 004, 006, 106.

® Refills available in Palette shades.



Mojave Poudre Palette

This rich palette is filled with natural olive to rich brown shades. Recommended by a busy makeup artist as an ideal palette for contouring and touch-ups. Expect 200-800 applications. MHCP-8 Net Wt. 1oz./28gm. Includes all Mojave Compact shades.

® Palette Refills shades: prefix RMHC.



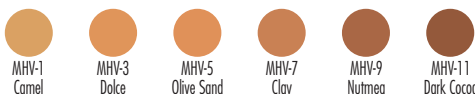
Bella Luxury Powders

Micro-milled for a silky texture, *Luxury Powders* are translucent with just a hint of color. Superior matte finish. Expect 50-125 applications per 1.5oz. BV 1.5oz./42gm. and 3oz./85gm. Shaker Bottles; 8oz./226gm. Jar.



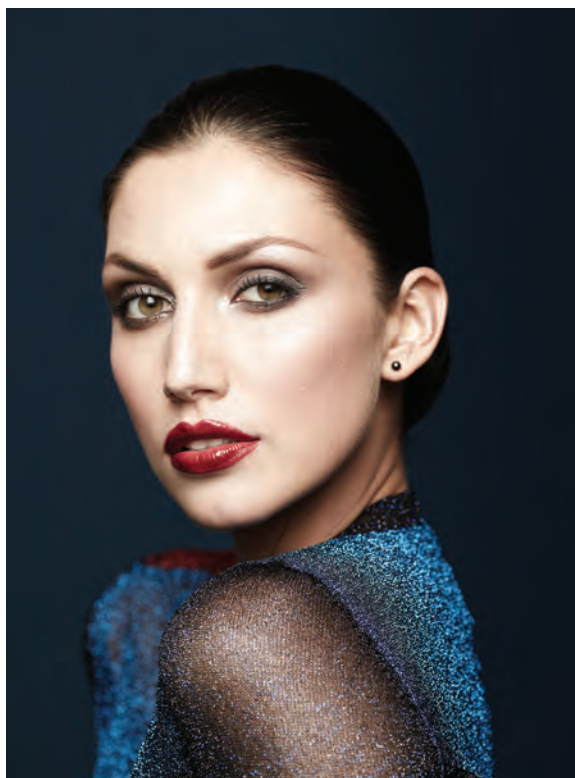
Mojave Luxury Powders

Translucent, silky powders add just a hint of warmth with golden to bronze undertones. Expect 50-125 applications per 1.5oz. MHV 1.5oz./42gm. and 3oz./85gm. Shaker Bottles.





Matt is wearing BN-4 Beige Natural 4 Matte Foundation and HDP-1 HD Matte Powder.



Nika is wearing HD-002 Bella 002 Sheer Foundation and BV-31 Cameo Luxury Powder.



Mary is wearing HD-517 Pale Biscotte Sheer Foundation and HDC-004 Bella 004 Poudre Compact.

Levon is wearing HD-901 Tan Au Lait Sheer Foundation and MHC-35 Honey Spice Poudre Compact.

COLOR CAKE FOUNDATIONS

Water activated Color Cake Foundation is often preferred by large cast ensembles, for body makeup or by performers with oily skin. Cakes yield a satin-finish that resists perspiration. Choose from 56 attractive shades.

Color Cake Foundation

Ben Nye's exclusive *Color Cake* formula produces a smooth finish that redefines foundation. Activate with water with a sea or *Hydra Sponge*, apply in sections, then "buff" as it sets to a translucent, natural finish. For full, opaque coverage (like our Queen Elizabeth I, below), apply over powdered *Creme Foundation*. Ideal for oily or sensitive skin. Expect 25-100 applications. PC 1oz./28gm.



Amanda as Queen Elizabeth I is wearing PC-022 Geisha & PC-2 Porcelain over IS-1 Special White Matte Foundation.

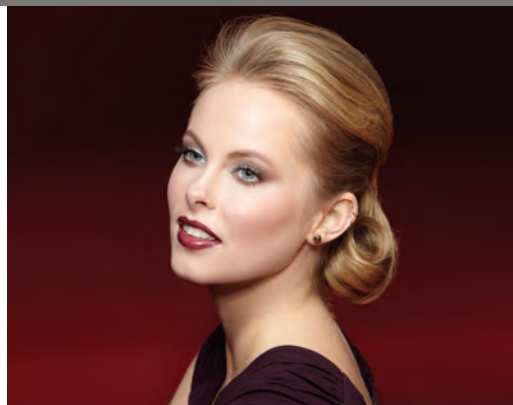


Alia as Puck is wearing PC-40 Shinsei Ivory & PC-42 Japanese body makeup.

PC-1 White	PC-1W Pale Rose	PC-02 Light Ivory	PC-021 Bisque	PC-022 Geisha	PC-2 Porcelain	PC-3W Tawny Peach	PC-30 Ecu	PC-305 Barely Beige	PC-31 Ciné Fairest	PC-32 Ciné Fair	PC-33 Ciné Lt. Beige	PC-34 Ciné Beige	PC-36 Ciné Lt. Tan
PC-4 Navajo Sand	PC-40 Shinsei Ivory	PC-41 Shinsei Fair	PC-42 Japanese	PC-43 Chinese	PC-46 Rose Blush	PC-47 Ingénue	PC-48 Fair Lady	PC-5 Natural No. 1	PC-5W Rich Tan	PC-51 Natural No. 2	PC-6 Buckskin	PC-7 Rose Beige	PC-7W Deep Tan
PC-8 Blithe Spirit	PC-81 Cadaver Grey	PC-82 Blue Spirit	PC-83 Sallow Green	PC-84 Death Purple	PC-840 Death Flesh	PC-841 Death Straw	PC-842 Pale Vampire	PC-843 Frankenstein	PC-87 Fair Male	PC-89 Tan Male	PC-9 Tan No. 1	PC-11 Tan No. 2	PC-111 Tan No. 3
PC-114 Warm Tan	PC-115 Ruddy Tan	PC-12 Auguste	PC-13 Natural Fair	PC-135 Calcutta	PC-137 Tan Au Lait	PC-14 Mocha	PC-16 Chestnut	PC-17 Light Egyptian	PC-19 Dark Egyptian	PC-20 Olive Sable	PC-205 Mocha Java	PC-21 Golden Ebony	PC-23 Black

MATTE HD FOUNDATIONS

Our expanded series of 84 Matte HD Foundations offer balanced shades that blend smoothly for medium coverage, or layer for more opacity. Ultra-light, HD compliant texture is ideal for broadcast, fashion, bridal, ballet, and opera.



Krystina is wearing SH-2 Shinsel Fair.

Matte HD Foundations

Smooth, light texture offers moderate coverage and builds naturally for full coverage. Apply with brush or sponge. Set lightly with powder. Expect 35-60 applications. .5oz./14gm.



Essential Matte HD Palette

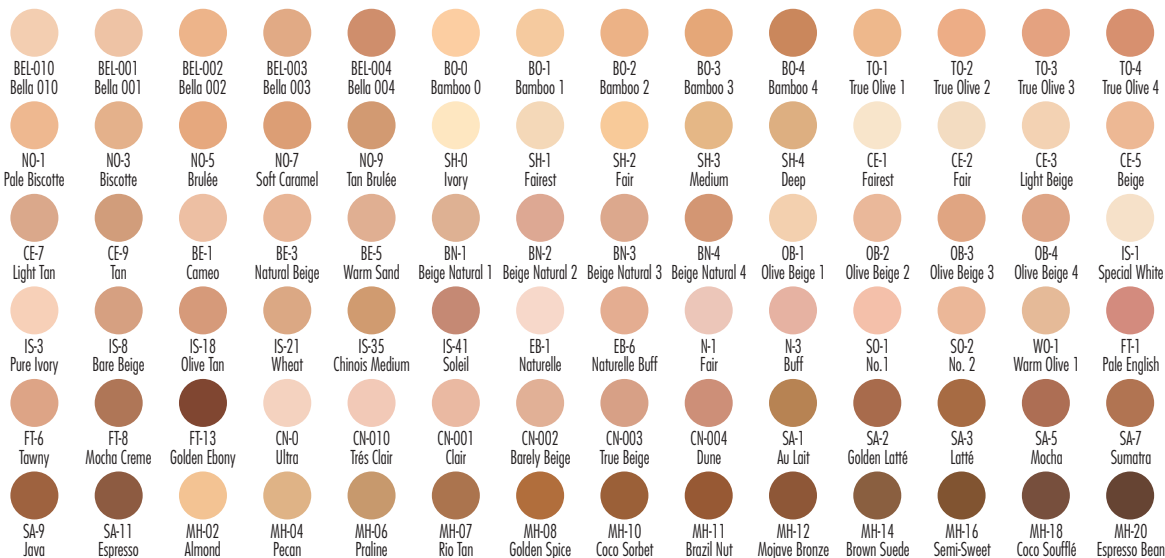
The ultimate palette to enhance nearly any skin tone. Hi-Def ready with moderate coverage and indispensable for the busy artist. Expect 100-250 applications. LFP-12 Net Wt. 1.69oz./48gm. Shades (by row L-R), Top: RCE-1, RCE-3, RPP-42, RBE-1, RBE-5, RIS-18; Bottom: ROB-1, RNO-5, RSH-3, RSA-1, RSA-5, RSA-11.

® Refills available in Palette shades.



Olive-Brown Matte HD Palette

Palette includes 12 vital shades from the Sahara, Maple and Mojave Series. Set with Mojave Compact or Luxury Powders. Expect 100-250 applications. BFP-12 Net Wt. 1.69oz./48gm. Shades (by row L-R), Top: RMH-02, RNO-7, RMA-1, RSA-1, RMH-08, RMH-10; Bottom: RSA-5, RMH-12, RMH-14, RSA-11, RMH-16, RMH-20. ® Refills available in Palette shades.



POWDER ROUGE

Formulated in a silky texture, our richly pigmented Powder Rouge series offers a striking display of color. Choose from soft, natural shades for subtle shaping, or bright and bold for fashion and avant garde designs.



Powder Rouge

Layer two or more shades to emphasize facial contours. Apply to powdered skin for best results and tone down with loose powder, if desired. Expect 100-250 applications. DR, CDS, DC .12oz./3.5gm. See Color Chart at bottom of page.



Fashion Rouge Palette

Refillable eight-color palette is fashion-ready. Warm and cool shades are included in soft pink and coral hues for natural high-lighting and contouring. Expect 200-500 applications.

ESP-922 Net Wt. .96oz./28gm. Shades (by row L-R), Top: DDR-75, 74, 21, 73; Bottom: DDR-162, 72, 23, 61.



Theatrical Rouge Palette

Our eight-color ensemble is practical and versatile for every working artist. Rich, vibrant colors complement most complexions for endless design options. Expect 200-500 applications.

ESP-924 Net Wt. .96oz./28gm. Shades (by row L-R), Top: DDR-1, 3, 9, 111; Bottom: DDR-23, 7, 61, 17.



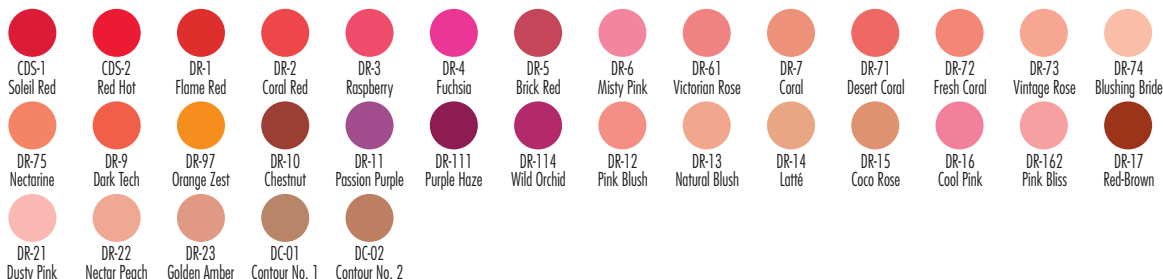
Essential Eye Shadow & Rouge Palette

At your service, six each of our most popular Eye Shadows and Powder Rouges in a refillable, magnetic palette. This exquisite assortment is all you'll need for film, runway, bridal and Hi Def application. Expect 400-750 applications. ESP-952 Net Wt. 1.44oz./42gm. Shades (by row L-R),

Top: ER-302, 314, 50, 56, 36, 99; Bottom: DDR-75, 74, 21, 73, 162, 72.

See Eye Shadow Color Chart on page 12.

® Refills available in all Powder Rouge shades. Use prefix CDSR, DDR or DCR.





Krystina is wearing DR-74 Blushing Bride and DR-21 Dusty Pink Powder Rouge.

EYE SHADOWS & PALETTES

Our Eye Shadows are known in the industry for their incredible quality. Now, 16 new shades assist with any assignment. Smokey, neutral or flirty shades are intensely pigmented in a silky-smooth, blendable texture.

All colors are available in individual pots and Palette Refills.



Powder Eye Shadows

Discover our stunning ensemble of *Eye Shadows* ranging from delicately neutral to vibrantly dramatic. Long-wearing, matte finish (except ES-332 *Misty Lilac*). Apply with *FDB Fine Detail Brushes*. Expect 25-150 applications. ES .12oz./3.5gm.



Essential Eye Shadow Palette

Our *Essential Eye Shadow Palette* is all you'll need for every style of makeup including print, bridal and film. This "Go-To" palette is filled with indispensable neutral highlight and contour shades to complement every complexion. Expect 400-750 applications. ESP-912 Net Wt. .96oz./28gm. Shades (by row L-R), Top: ER-302, 314, 50, 37; Bottom: ER-99, 98, 36, 595.



Glam Shadow Palette

Inspired by a renowned makeup aficionado, our *Glam Shadow Palette* makes work seem like play! The best of practical neutrals and alluring jewel tones make a winning combination. Expect 400-750 applications. ESP-954 Net Wt. 1.44oz./42gm. Shades (by row L-R), Top: ER-314, 318, 35, 36, 98, 86; Bottom: ER-37, 538, 595, 78, 782, 99.



Theatrical Eye Shadow Palette

When the job calls for spectacular eye makeup, our *Theatrical Shadow Palette* provides artistic inspiration. Matte shades include *White*, *Black*, plus six elegant and sultry shades for definition and drama. Expect 400-750 applications. ESP-914 Net Wt. .96oz./28gm. Shades (by row L-R), Top: ER-30, 34, 50, 35; Bottom: ER-72, 80, 57, 99.



® Refills available in all Eye Shadow shades. Use prefix ER.

EYE LINERS & MASCARAS



MediaPRO Eye Definers

Ben Nye, Sr. called it *Lash Shadow* 60 years ago. Today's *Eye Definer* contains ultra pigmentation in a silky texture for stylish, smudgable eye lining and contour. *Aubergine, Taupe* and *Soft Grey* are contemporary additions. "Set" with *Eye Shadows*. Expect 75-200 applications. SL .35oz./10gm.



Mascara & Bright Mascara

Our creamy, smudge-resistant *Mascaras* intensify focus on the eyes. *Bright Mascaras* add an edgy accent to eyes. *White* is ideal to age facial hair and lashes, while *Clear* "sets" and styles without adding color. Expect 75-150 applications. LM .31 fl. oz./9.3ml. LM-3 .35 fl. oz./10.3ml.



Creme Eye Liner Pencils

Color-rich, moist formula glides on like silk. Smudge for a soft, smokey eye. Set with *Eye Shadow* for a long-wearing finish. Expect 50-175 applications. EP-85 Espresso, EP-90 Onyx. 4.75" Length, .04oz./1.13gm.

Liquid Eye Liner

When precision is crucial, our *Liquid Eye Liners* quickly provide clean, crisp lines. Fluid, opaque color flows easily from the fine brush in a smudge and water-resistant formula. Expect 35-100 applications.

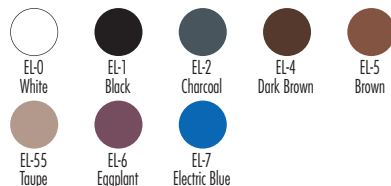
From top: LE-2 Dark Brown, LE-0 White, LE-1 Ebony (Black). .38 fl.oz./11.3ml.



Cake Eye Liner

Define eyes with this classic, matte liner. Mix with water to a creamy, pigment rich consistency and apply with *RS-1 Round* or *AB-4 Angle Brush*. Smudge as it dries for a softer line. Mix with *LiquiSet* in place of water for long-lasting, water-resistance.

Expect 50-200 applications. EL .07oz./2gm. EL-11 Black and EL-41 Dark Brown Pro Size .18oz./5.5gm.



Eyebrow Pencils

Formulated in a firm texture, *Eyebrow Pencils* hold a precise point to create "wisps" of color to naturally augment brows. Sharpen with *Single Hole Sharpener (SP)*. Expect 75-225 applications. EP 7" Length, .05oz./1.4gm.



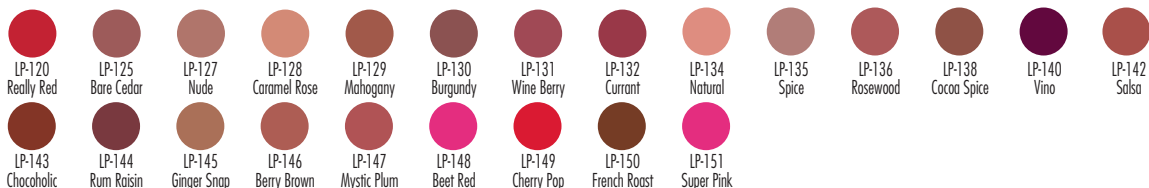
LIPSTICKS & LIP PENCILS

Our glamorous collection of *Palettes, Lipsticks, Pencils and Glosses* shape and define lips to perfection. Lip colors add style and finishes the look.



Lip Colour Pencils

Decadently creamy pencils line, shape or fill lips with ease and saturated color. Available in 23 beautiful shades. Sharpen with our *Single Hole Sharpener (SP)*. Expect 50-150 applications. LP 7" Length, .065oz./1.83gm.



Lip Gloss Versatile tints add high shine and a wash of color to bare lips or over lip color. *Glazes* contain a hint of shimmer. Lightly scented. Pots are "stackable".

Expect 50-100 applications. LGS .25oz./7gm.

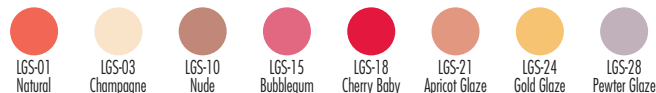
Lip Gloss Stack Can't decide? Five full-sized pots are stacked together to conveniently slip into your makeup kit.

Expect 250-500 applications. LGSS-1 Net Wt. 1.25oz./35gm.

Lip Gloss Wheel Six of our best *Glosses* perfectly packed in a handy wheel.

Expect 200-350 applications. LGW .94oz./26.6gm. Shades (clockwise from upper left):

Cherry Baby, Gold Glaze, Nude, Bubblegum, Apricot Glaze, Natural (center).



Lip Colour Palettes

Beautiful and practical *Palettes* include six tabs of creamy, long-wearing color. Apply individually or blend into custom-perfect shades. Each *Palette* includes brush. *Empty Palette* with six tabs and brush is ready to fill with your own shades or *Refills*. Includes *FDB-71 Lip Brush*. Expect 200-300 applications per palette. Net Wt. .36oz./10.2gm. LSP-1 Natural

Palette Shades (Top, L-R): RLS-47 First Blush, 48 Watermelon, 26 Primrose, 19 Mocha Rose, 12 Natural Brown, 49 Cherry Cola*

LSP-2 Fashion Palette Shades (Bottom, L-R): RLS-46 Shy Apricot*, 52 Pink Tart, 51 Cherryberry, 50 Poppy, 33 Marilyn Red, 53 Sangria*

LSP-0 Empty Palette with Six Tabs and Brush (Refills sold separately)

* Available only in Palette. See Lipstick Color Chart on page 15.



® Refills available in Palette shades.



Nika is wearing LS-63 Red Coat Lipstick.



Mary is wearing LS-61 Twilight mixed with LS-17 Black Lipstick, topped off with LGS-01 Natural Lip Gloss.

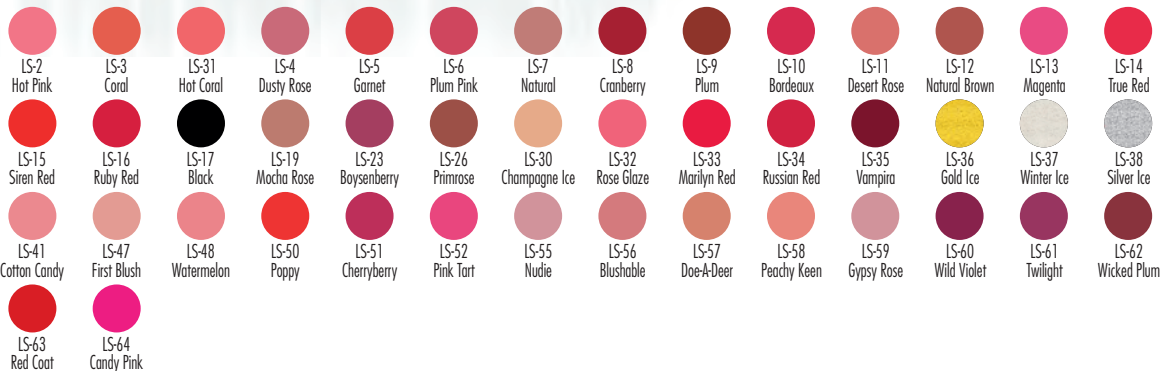


Lipsticks

Our *Lipsticks* inspire your artistic sense in a collection of natural, bold and sultry colors, including ten beautiful new shades. All have the look and feel of cosmopolitan brands in a moist base, intensely saturated with color for vibrant, long-lasting durability. Layer one or more shades to create irresistibly luscious lips.

"Ice" shades contain a burst of shimmer. *Red Coat* has a matte finish. **Expect 30-125 applications.**

LS .12oz./3.4gm.



LUMIÈRE GRANDE COLOUR & PEARL SHEEN

Phenomenal for brilliance, Lumière transforms beauty, fantasy, avant garde and even F/X makeup into art. Intense color and shimmer in every shade exceed your expectations.

Lumière Grande Colour

Extreme color power and enticing shimmer. Pressed pigment-rich *Grande Colours* apply dry for a softer finish, or with water for enhanced opacity. Seal with *Final Seal* or *LiquiSet* for durability. Expect 25-150 applications. LU .09oz./2.7gm.



Metallic Palette

Metallic staples, such as *Silver* and *Aztec Gold*, add instant glitz to your designs. Subtle when applied dry, intense applied wet.

Expect 150-1000 applications. ESP-93 Net Wt. .76oz./21gm.

Shades (by row L-R), Top: LUR-1, 2, 3, 4; Bottom: LUR-18, 21, 5, 20.



Brilliant Colour Palette

Be fierce, be bold! This bedazzling *Palette* is an explosion of richly pigmented *Grande Colours*. Apply wet for even more brilliance.

Expect 150-1000 applications. ESP-94 Net Wt. .76oz./21gm.

Shades (by row L-R), Top: LUR-6, 7, 17, 13; Bottom: LUR-11, 12, 8, 16.



® Refills available in all Lumière shades. Use prefix LUR for ESP Palettes above, RL for LUK-12 below.



Pearl Sheen

Lustrous, soft jewel and metallic shades will add a touch of glamour to bridal, beauty or red carpet makeup. Shimmery highlights appear natural and spontaneous.

Expect 25-50 applications. PS .06oz./1.7gm.



Lumière Grande Color Palette

Our best-selling, multi-dimensional *Lumière Palette* transitions easily from fashion and beauty to body and face painting. Refillable. Includes *FB-7 Flat Brush*.

Expect 250-1200 applications. LUK-12 Net Wt. 1.52oz./43.2gm. Shades (by row L-R), Top: RL-1, 3, 4, 16, 12, 6; Bottom: RL-2, 7, 8, 10, 14, 17.



LUMIÈRE CREMES & SHIMMER CRAYONS



Lumière Creme Colours

Supreme blendability and radiant iridescence. Enriched with lavish pigments, *Lumière Cremes* excel as creme eye shadows, especially when layered with *Lumière Grande Colours*. Pots conveniently stack.

Expect 20-80 applications. LCR .3oz./8.5gm.

Lumière Creme Stacks

Two assembled *Creme Stacks* offer 5 colors each for high-output options: Indispensible *Metallics* and vibrant *Brilliants*. Expect 100-400 applications per Stack. Net Wt. 1.5oz./42gm. LCRS-1 *Metallics Stack* shades (above right): LCR-1, FW-1, LCR-5, 4, 21. LCRS-2 *Brilliants Stack* shades (above left): LCR-6, 16, 12, 13, 10.



Lumière Creme Palette

The twelve most popular shades are conveniently assembled in a refillable "paint box" style palette. Set with *Grande Colours* or *Luxe Powders* for spectacular color effects. Includes *FB-7 Flat Brush*. Expect 250-1200 applications.

LCP-12 Net Wt. 1.5oz./43gm. Shades (by row L-R), Top: RLC-1, 6, 16, 12, 4, 5; Bottom: RLC-10, 155, 17, 13, 7, 21.



Fireworks Creme Colors

Iridescent pigments in a silky texture make *Fireworks* the perfect companion to *Lumière Cremes*. Layer with *Grande Colours* or *Luxe Powders* to "set". Expect 20-80 applications. .3oz./8.5gm. Shades shown above (L-R): FW-3 Silver Satin, FW-9 Copper, FW-7 Ruby Luster, FW-1 Gold Dust, FW-11 Bronze. Silver Satin also available in 1oz./28gm. (FW-41).



Anna is wearing a rainbow of Lumière Grande Colours.



Shimmer Crayons

High-intensity *Shimmer Crayons* glide on like liquid metal. Immediately blendable and smudgable, colors magically "set" to a water-proof finish within minutes. Once set, buff lightly with fingers to intensify brilliance. Safe for eyes. Expect 20-75 applications.

Shades shown above (from top): CSC-4 Opal, CSC-2 Gold, CSC-3 Night, CSC-1 Silver. .10oz./2.8gm.



FW Fireworks Wheel

Expect 75-250 applications.

Net Wt. 1oz./28gm.

Shades (CW from upper left): FW-9, 1, 3, 11, LCR-1, FW-7 (C)



LW Lumière Wheel

Expect 75-250 applications.

Net Wt. 1oz./28gm.

Shades (CW from upper left): LCR-12, 13, 6, 10, 15, 1 (C)

LUMIÈRE LUXE POWDERS

You'll love the colorful brilliance of our Lumière Luxe, Luxe Sparkle and new Ultra Bright Powders. Design options are limitless! Apply dry or wet for beautiful fantasy and avant garde effects. Airbrush compatible.



Lumière Luxe Powders

Dust *Luxe Powder* over bare skin or apply over finished makeup for striking luminescence. For total "liquid color" coverage, blend with *LiquiSet* or *Final Seal* for smudge-proof durability on face or body. Adjust sealer to powder ratio for desired opacity and airbrush efficiency. Expect 25-150 applications. LX .21oz./6gm. - .28oz./8gm.



Christine is wearing LX-9 Mermaid Green Luxe Powder applied with LiquiSet and LX-100 Lumière Ultra Bright Powder.



Lumière Ultra Bright Powder

Ultra Bright Powder feels feather light and sparkles like miniature diamonds. Stunning applied dry on bare skin, over makeup, or blended with our *Sealers* for a durable, high gloss finish.

Expect 25-150 applications. LX-100 .28oz./8gm.

Lumière Luxe Sparkle

Shimmering pigment, plus our high intensity glitter, are a remarkable combination. Mix with our *Sealers* for smudge-proof durability on face, hair and body. *Iced Gold* is a favorite for fairies, angels and ice queens.

Expect 10-100 applications.

LXS .28oz./8gm.



LUMIÈRE LUXE POWDERS

LX-1 Ice	LX-2 Iced Gold	LX-3 Aztec Gold	LX-4 Silver	LX-5 Bronze	LX-6 Indian Copper	LX-61 Sun Yellow
LX-7 Tangerine	LX-8 Chartreuse	LX-9 Mermaid Green	LX-10 Jade	LX-11 Turquoise	LX-12 Cosmic Blue	LX-13 Royal Purple
LX-14 Amethyst	LX-15 Persimmon	LX-155 Cherry Red	LX-16 Azalea	LX-17 Cosmic Violet	LX-18 Golden Apricot	LX-19 Peacock

LUMIÈRE LUXE SPARKLE POWDERS

LXS-2 Iced Gold	LXS-4 Silver	LXS-61 Sun Yellow	LXS-9 Mermaid Green
LXS-12 Cosmic Blue	LXS-16 Azalea	LXS-17 Cosmic Violet	LXS-20 Starry Night

FANTASY GLITTERS

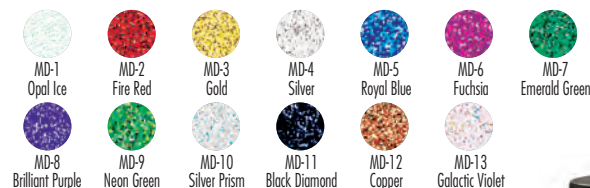
It's all razzle-dazzle with Ben Nye's Sparklers, Aqua Glitters and Glitz It! Create instant glamour for fantasy, edgy fashion and high-energy dance.



Sparklers Glitter

Apply to face, body and hair. Set *Sparklers* into creme makeup or lips. Spray *LiquiSet* to skin and lightly dust on glitter for a delicate, sparkle finish. Mix with *Glitter Glue* or *LiquiSet* for detailed applications. New large (LD) container. Both sizes include sifter fitment.

Expect 10-50 applications per MD container. MD .14oz./4gm.; LD .5oz./14gm.



Glitz It Glitter Gel

Iridescent *Opal Ice* glitter is suspended in an invisible gel that quickly dries to a matte finish. Great for all over sparkling effects on face, hair and body. Expect 10-30 applications. GG-1 1oz./28gm.

Glitter Glue

Effective, light weight glue keeps loose glitter and sequins in place. Alcohol-based. Remove with *Hydra Cleanse* or cleanser and water.

Expect 20-75 applications.

AGB 1 fl.oz./29ml.



Milan is wearing a blend of MD-5 Royal Blue and MD-9 Neon Green Sparklers applied with *LiquiSet*.

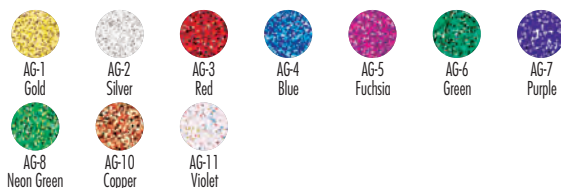


Aqua Glitter

Bewitching glitter in a clear liquid dries to a brilliant finish! Apply over makeup or directly to face, hair and body. Brush applicator included. Shake well before use.

Note: To avoid evaporation, clean bottle neck and cap threads, then cap tightly.

Expect 20-60 applications. AG 1fl.oz./29ml.

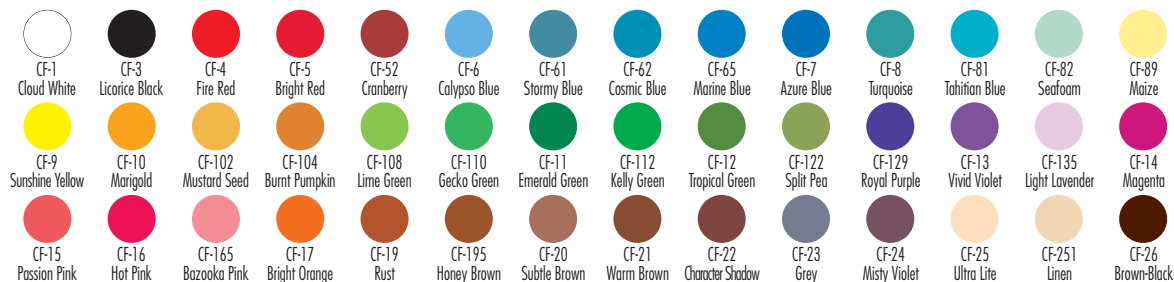


MAGICAKE® & MAGICOLOR®



MagiCake Aqua Paints

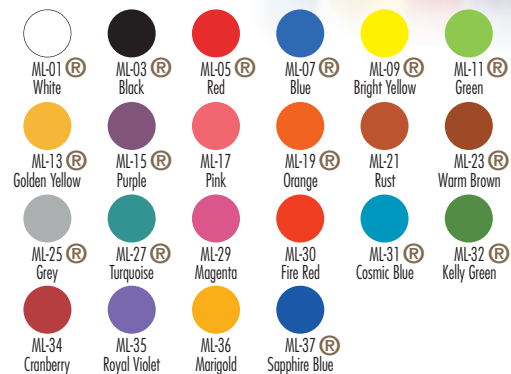
MagiCakes produce exquisite color for fantasy, face and body paint. Mix with water or *LiquiSet* for added durability. Apply with flat brush for detail or *Hydra Sponge* for all over color. Smudge-resistant when dry; spray with *Final Seal* to extend wear and retard perspiration. Remove with *Hydra Cleanse* or similar cleanser. Expect 25-50 applications per CF container. CF Min. Wt. .21oz./6gm.; Select shades available in LA Pro Size Min. Wt. .77oz./22gm.



® Palette Refills available in all MagiCake shades. Use prefix RM.

MagiColor Liquid Paints

Richly pigmented in 22 beautiful shades, *Liquid Paints* dry to a smudge and water-resistant finish. Apply with air brush, sponge or brush. Viscosity varies by shade. If needed, thin with *LiquiSet* or *Final Seal* for desired air brush consistency. Expect 20-70 applications per ounce. ML 1fl.oz./29ml.; 4fl.oz./118ml. Refills available in select shades ®.



MagiCake Aqua Paint Palettes

Indispensible for busy artists, especially body and face painters. Six or twelve indispensable shades are available in refillable metal palettes. Includes *No. 7 Flat Brush*. Refills available in all 42 shades. Expect 25-100 applications per color. CFK-12 Net Wt. 1.69oz./48gm. Shades (by row, L-R), Top: RM-1, 5, 7, 9, 112, 3; Bottom: RL-62, 108, 129, 16, 17, 195. CFK-6 Net Wt. .84oz./24gm. (not pictured). Shades: RM-1, 5, 7, 9, 112, 3.



MagiColor Creme Crayons

MagiColor Crayons are great for quick strokes of lasting color and instant touch-ups. Set with *Neutral Set Powder*. Shapen with *Dual Hole Sharpener (DP)*. Expect 30-75 applications. MJ .05oz./1.4gm.-.09oz./2.5gm.



MagiColor Creme Pencils

Creamy and colorful detail for fantasy, clowning, face painting or sports fans. Easy clean-up. Sharpen with *Single Hole Pencil Sharpener (SP)*. Expect 30-75 applications. MC .04oz./1.13gm.





Final Seal Matte Sealer

Final Seal keeps makeup in place, even when performers perspire heavily. Apply pre-makeup to retard perspiration, and over any completed makeup for a smudge-proof finish. Adds durability to air-brushed *Liquid Paints*. Alcohol-based with fresh mint scent. Use in well-ventilated area.

Expect 20-50 applications per ounce.

FY-0 1fl.oz./29ml. Spray

FY-2 2fl.oz./59ml. Spray

FY-8 8fl.oz./236ml. Refill

FY-16 16fl.oz./473ml. Jug



LiquiSet Mixing Liquid

Mix *LiquiSet* with any water-activated makeup for a smudge and water-resistant finish. Mix with *Lumière Powders* (page 18) to create a beautiful, luminescent paint. Gentle enough for eyelids!

Note: Colors applied with *LiquiSet* will not blend.

Expect 10-40 applications per ounce.

LQ-0 1fl.oz./29ml. Spray

LQ-1 1fl.oz./29ml.

LQ-2 2fl.oz./59ml.

LQ-21 2fl.oz./59ml. Spray

LQ-4 4fl.oz./118ml.

LQ-16 16fl.oz./473ml. Jug



Quick Cleanse

Light, gentle formula easily removes all creme makeups. Gently massage cleanser into makeup with cotton pad, fingers or sponge and wipe away. Rinse skin with water.

Expect 4-20 applications per ounce.

QR-1 .5fl.oz./14ml.

QR-2 1fl.oz./29ml.

QR-3 2fl.oz./59ml.

QR-41 8fl.oz./236ml. Pump

QR-5 16fl.oz./473ml. Jug



Hydra Cleanse

Oil-free and fragrance-free makeup remover gently cleanses face and body, leaving skin clean and smooth. Excellent as an eye makeup remover and pre-makeup cleanser. Cleans water-based makeup residue quickly from brushes.

Expect 15-50 applications per ounce.

HR-1 2fl.oz./59ml.

HR-21 8fl.oz./236ml. Pump

HR-3 16fl.oz./473ml. Jug



Spirit Gum Remover

Efficiently dissolves the sticky residues of *Spirit Gum Adhesive*. Follow with *Hydra Cleanse* or soap and water.

Expect 3-15 applications per ounce.

GR-1 .5fl.oz./14ml.

GR-2 1fl.oz./29ml.

GR-22 2fl.oz./59ml.

GR-25 4fl.oz./118ml.

GR-3 8fl.oz./236ml.



Remove-It All

Contains universal solvents that make it indispensable as a cleanser to gently and efficiently remove all creme makeup, *Spirit Gum Adhesive*, *Medical Adhesive* and *Prosthetic Adhesive*. Non-hazardous, fragrance free.

Expect 15-50 applications per ounce.

RR-2 2fl.oz./59ml.

RR-8 8fl.oz./236ml.



Bond Off! Remover

Quickly and thoroughly removes *Spirit Gum*, *Prosthetic Adhesive* and similar adhesive residues from skin and appliances. Follow with *Hydra Cleanse* or soap and water.

Expect 5-15 applications per ounce.

BR-0 .5fl.oz./14ml.

BR-11 1fl.oz./29ml.

BR-1 2fl.oz./59ml.

BR-15 4fl.oz./118ml.

BR-2 8fl.oz./236ml.

BR-3 16fl.oz./473ml. Jug

BR-4 32fl.oz./946ml. Jug



Brush Cleaner

Effective cleaning solution quickly dissolves all oil-based makeup. Available in convenient spray bottle to quickly clean rouge and powder brushes. Pleasant scent. Alcohol-based. Use in well ventilated area.

Cleans approximately 75 brushes per ounce.

BC-0 1fl.oz./29ml.

BC-1 2fl.oz./59ml.

BC-11 2fl.oz./59ml. Spray

BC-21 8fl.oz./236ml. Pump

BC-3 16fl.oz./473ml. Jug

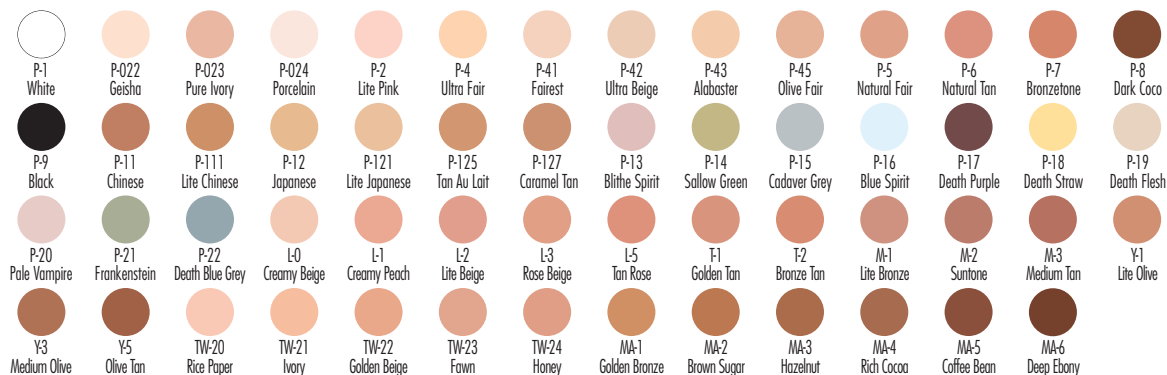
BC-4 32fl.oz./946ml. Jug

CREME FOUNDATIONS & CLOWN WHITE

Creme Foundations are the artistic standard. Select from 55 exceptional shades for beauty, ethnic and character, including our death shades.

Creme Foundations

Creme Foundations provide full, creamy coverage that blends flawlessly with all *Creme Colors*, *Concealers* and *F/X Colors*. Set with *Translucent* or *Neutral Set Face Powders* (see page 24). Expect 25-75 applications. .5oz./14gm.



Clown White

Professionals prefer *Clown White's* supple texture and bright white finish. Highly pigmented formula covers instantly and blends smoothly for long-wear. Set with *Super White Powder* to enhance whiteness and spray with *Final Seal* for added durability.

Expect 5-10 faces per ounce.

CW-1 .65oz./18gm. CW-2 1.75oz./49gm. CW-3 2.25oz./63gm.
CW-4 8oz./227gm. CW-5 16oz./454gm.

Clown White Lite

Clown White Lite's creamy, bright white formula is ideal for performers who prefer a lighter texture. Professionals who use our *Lite* formula say it holds up to wrinkles and remains durable under hot, humid conditions. Set with *Super White* for a brighter white, or *Neutral Set* for no color. Finish with *Final Seal* for all-day durability.

Expect 75-125 full faces per ounce.

FP-102 1oz./28gm. FP-202 2.5oz./70gm.

CREME COLORS & PROFESSIONAL FOUNDATIONS

Our high-intensity *Creme Colors* provide essential detail and dimension from subtle to vibrant character designs. Set with *Neutral Set Powder*. Easy clean-up with *Quick Cleanse* or *Hydra Cleanse*.



Creme Cheek Rouges

Rouges add contour and radiance to cheeks and face. Now in a silky texture that blends easily for subtle or bold intensity as desired. Expect 35-125 applications. CR .25oz./7gm.



Creme Highlights

Improve and emphasize facial features. Use brighter tones, such as *CH-0 Ultralite*, to create the aging when used in tandem with shadows. Warmer shades minimize under-eye discoloration. Expect 35-125 applications. CH .25oz./7gm.



Creme Brown Shadows

Shadows alter or improve features, such as narrowing a strong jaw line or correcting a crooked nose. Intensify age effects with *CS-3 Character Shadow*. *CS-11* and *CS-21* are subtle, natural tones. Expect 35-125 applications. CS .25oz./7gm.



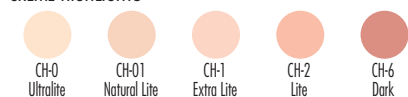
Creme Colors

Unmatched for colorful virtuosity, *Creme Colors* offer rich pigmentation and versatile application in an improved texture. Set with *Neutral Set Powder* to retain brilliance and resist perspiration. Expect 35-125 applications. CL .25oz./7gm.

CREME CHEEK ROUGE



CREME HIGHLIGHTS



CREME SHADOWS



CREME COLORS



Professional Creme Series

The *Pro Creme Series* is an exceptional value for performers who want quality at an economical price. Easy to apply and richly pigmented for long wear. Set with *Neutral Set Powder* for durable brilliance. Expect 75-125 full faces per ounce. FP 1oz./28gm.



F/X COLORS & FACE POWDERS

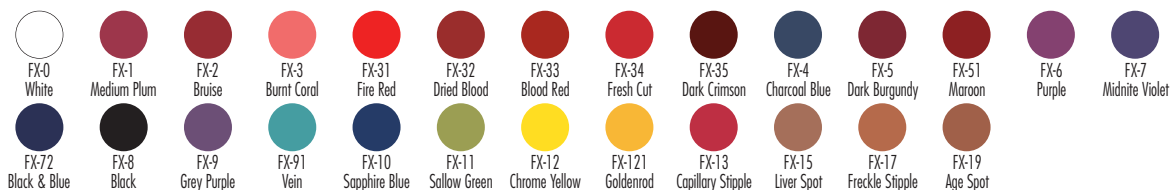
Ultimate F/X Palette

Our *F/X Palette* provides ultra-realism for bruises, abrasions, black eyes, burns and character effects. Set with *Neutral Set Colorless Powder*. Easy clean-up with *Quick Cleanse* or *Hydra Cleanse*. All shades available in individual pots and *F/X Stacks*. Expect 200-750 applications. HFXP-1 Net Weight 1.5oz./42gm. Shades (by row L-R), Top: FX-0, 12, 121, 11, CL-10, FX-13; Center: FX-31, 34, 2, 32, 5, 35; Bottom: FX-91, 10, 6, 72, 9, 8.



F/X Creme Colors

Now 26 remarkable colors! All produce life-like, "in the skin" effects for black eyes, bruises, abrasions, burns and character detailing. *F/X Colors* are acutely designed, boldly pigmented and micro-blended in a silky, buildable texture. For a "wash effect", brush a few drops of alcohol onto painted colors. Set with *Neutral Set Colorless* Powder. Spray with *Final Set* to resist perspiration.



F/X Color Stacks

Our five-color *Stacks* offer the most useful selection of effects-specific shades. Replace or add shades as needed (details above). Select from *Bruise*, *Burn* and *Age Stacks*.

Expect 100-500 applications. Net wt. 1.5oz./42gm.

FXS-1 Bruise Stack (left): FX-12, 11, 2, 5, 7.

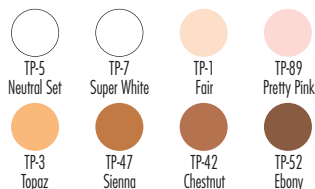
FXS-3 Burn Stack (center): FX-3, 31, 1, 4, 8.

FXS-2 Age Stack (far right): FX-91, 9, 13, 15, 17.



Face Powders

Soft and light *Powders* are naturally matte and durably set creme makeups. Apply to cheeks and eyes before *Rouges*, *Shadows* and *Lumière Grande Colours* for smooth, even application. Match to skin tone. *Neutral Set* is colorless for all applications. Expect 50-125 applications per 1.5oz. Min. Net Wt. 1.5oz./42gm. and 3oz./85gm. Shaker Bottles. Fair, Neutral Set, Super White and Pretty Pink available in 8oz./226gm. Jar. Fair, Neutral Set and Super White also available in .9oz./25gm. Mini Shaker.



CREME EFFECTS WHEELS

F/X Color Wheels

F/X Wheels are a remarkable artistic resource to create burns, bruises, aging and other character effects. Red and purple shades are formulated in new high-intensity "ultimate effect" formula. Achieve a thin "stain" by blending with several drops of alcohol on a brush. Set with *Neutral Set Powder*, followed by a light spray of *Final Seal* for extra durability. Expect 50-300 designs per .5oz./14gm. Wheel (Net Wt.). *Wheels noted clockwise from upper left.*



CK-1 Bruises
FX-11, FX-7, FX-5, CL-18



CK-3 Cuts & Bruises
FX-10, CL-5, CL-14, CL-2



CK-4 Bruise & Abrasions
CL-131, CL-17, CL-15, CL-6



CK-5 Burns & Blisters
FX-1, CL-13, FX-4, FX-3



CK-7 Age Stipple
FX-13, FX-15, FX-19, FX-17



CK-8 Age Effects
FX-13, FX-15, FX-9, FX-91



CK-9 Severe Exposure
FX-13, CL-13, CL-10, CR-2



CK-11 Old Character I
CS-3, CH-0, CL-17, FX-13



CK-13 Old Character II
CS-6, CL-15, CL-17, SC-3



CK-15 Camouflage
CL-61, CL-11, CL-28, CL-31

Professional Wheels

Pro Creme Wheels provide professionals with unlimited character options. Reds, purples and violets are designed in our *Ultimate F/X Formula*. All can be layered for intensity and thinned with alcohol to create a translucent wash. Blood shades are great to simulate various subtle injuries (fresh or healing). Set with *Neutral Set Colorless Powder*. Expect 100-600 designs per 1oz./28gm. Wheel (Net Wt.). *EW-9 Bald Cap Stipple Wheel not pictured.*



MDW Master Disaster
FX-35, FX-34, FX-72, FX-33, CL-19, FX-0 (C)



ZW Zombie Wheel
FX-32, FX-7, FX-121, FX-2, FX-11, CL-25 (C)



MW Monster Wheel
P-16, P-15, CL-15, CL-17, P-14, CL-1 (C)



DW Death Wheel
P-21, P-22, P-19, P-17, P-18, P-20 (C)



EW-1 Pro Bruises Wheel
FX-11, FX-7, FX-5, CL-18



EW-3 Pro Cuts & Bruises
FX-10, CL-5, CL-14, CL-2



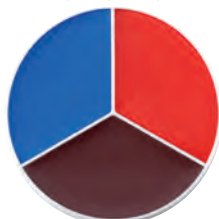
EW-4 Master Bruise
FX-7, FX-11, CL-14, FX-5, CL-18, CL-5 (C)



EW-41 Pro Bruise & Abrasions
CL-131, CL-17, CL-15, CL-6



EW-5 Pro Burns & Blisters
FX-1, CL-13, FX-4, FX-3



EW-7 Trauma Simulation
CL-19, CL-13, FX-5



RW Rainbow Wheel
CL-5, CL-3, CL-7, CL-19, CL-13, CL-29 (C)



RB Red, White & Black
CL-29, CL-13, CL-1



Bald Cap

Finely crafted *Woachie Bald Caps* are the standard for most theatrical applications. Apply with *Spirit Gum*, contour edges with *Liquid Latex*. For helpful application techniques, watch our DVD, "*How to Apply a Bald Cap*" (see page 31). Reusable; store clean, dry cap in sealed plastic bag. **BP-0**



Spirit Gum Adhesive

Our professional adhesive formula dries to a matte finish and keeps prosthetic appliances, lace, beards and hair pieces firmly in place. Tap *Gum* until "tacky" before use. Remove with *Spirit Gum Remover*, *Bond Off!* or *Remove-It All*.

Expect 4 applications per .25 ounce.

SG-1 .25fl.oz./7ml. SG-2 1fl.oz./29ml.
SG-25 4fl.oz./118ml. SG-3 8fl.oz./236ml.
SG-4 16fl.oz./473ml. Jug

Glitter Glue

Sparklers Glitter, small jewels or sequins stick easily with this no fuss, light adhesive. Alcohol base and water-washable. (Pictured on page 19.)

Expect 20-75 applications per ounce. AGB 1fl.oz./29ml.



Prosthetic Adhesive

A mastic to securely bond prosthetic appliances to the skin. Retards perspiration. Remove with *Remove-It-All* or *Bond Off!*

Expect 15-35 applications per ounce.

AD-1 1fl.oz./29ml. AD-3 4fl.oz./118ml.

Liquid Latex

Liquid Latex is a multi-purpose liquid rubber, often called "slip rubber". Create 3-D appliances in a slush mold, seal modeling wax or apply to skin for aging, blisters and wounds. Fair flesh-tone dries nearly transparent.

Expect 8-20 applications per ounce.

LL-1 1fl.oz./29ml. LL-2 2fl.oz./59ml. LL-25 4fl.oz./118ml.
LL-3 8fl.oz./236ml. LL-4 16fl.oz./473ml. Jug LL-5 32fl.oz./946ml. Jug

Clear Latex

Same qualities as *Liquid Latex*, without the coloring. Dries clear.

Expect 8-20 applications per ounce.

LR-1 1fl.oz./29ml. LR-25 4fl.oz./118ml.

Latex for Sensitive Skin

Low-ammonia formula for extremely dry or sensitive skin.

Expect 8-20 applications per ounce. LL-52 2fl.oz./59ml.

Wrinkle Stipple

Thinner than *Liquid Latex*, apply to stretched skin for realistic facial wrinkling, especially around eyes for "crowsfeet". For transparency, apply thin layer of *Castor Sealer* before coloring with cremes.

Expect 8-35 applications per ounce.

WS-1 1fl.oz./29ml. WS-2 2fl.oz./59ml.



Nose & Scar Wax

Now in three improved shades! Modeling wax is pliable, yet firm. Apply to alter facial features, such as a broken nose, extended chin or nose, bullet holes and wounds. Wax colors are translucent to resemble skin. Apply *Spirit Gum* beneath wax for better adhesion. Texture with *Fine Stipple Sponge* and seal with *Liquid Latex*.

Expect 4-25 applications per ounce.

Fair Wax	Light Brown Wax	Brown Wax
NW-1 1oz./28gm.	LBW-1 1oz./28gm.	BW-1 1oz./28gm.
NW-2 2oz./56gm.	LBW-2 2oz./56gm.	BW-2 2oz./56gm.
NW-3 8oz./226gm.	LBW-3 8oz./226gm.	BW-3 8oz./226gm.
NW-4 16oz./453gm.		BW-4 16oz./453gm.

Bone Wax

Natural white wax simulates bone color for broken bones and exposed skulls.

Expect 4-25 applications per ounce.

BS-2 2oz./56gm. BS-3 8oz./226gm. BS-4 16oz./453gm.

Castor Sealer

Ideal to seal latex materials and appliances. After sealing, creme makeup can be applied to latex; eliminates need for rubber mask grease.

Expect 15-40 applications per ounce.

KS-00 .5fl.oz./14ml. KS-0 1fl.oz./29ml.
KS-1 2fl.oz./59ml. KS-2 8fl.oz./236ml.

HAIR COLORS & EFFECTS

Liquid Hair Colors

Ben Nye, Sr. pioneered *Silver Grey Hair Color* to subtly age hair to a natural silver-grey tone. *Ivory Hair Color* is our latest innovation to naturally age dark hair without it appearing blue. Apply with toothbrush to styled hair. Set with hair spray. Avoid use on chemically treated hair. Protect costumes during application. Expect 3-10 applications per ounce.



Silver Grey Our original age hair color. Realistic silvery-grey age tone with subtle metallic highlights.

HG-1 1fl.oz./29ml. HG-2 2fl.oz./59ml.

HG-3 8fl.oz./236ml. HG-4 16fl.oz./473ml.

Dark Grey Recently revised, this shade is now a true deep grey.

DG-2 2fl.oz./59ml. DG-3 8fl.oz./236ml.

Taupe Subtle neutral brown adds dramatic contrast to white hair.

TH-2 2fl.oz./59ml.

Auburn Rich, warm red-brown tone.

AH-2 2fl.oz./59ml.

Dark Brown Rich, natural shade for blending or an all-over color. May be used to fill in bald spots.

BH-2 2fl.oz./59ml.

Snow White Streak into *Silver Grey* or *Dark Grey* to brighten highlights. Excellent for Santa's beard and brows.

HW-1 1fl.oz./29ml. HW-2 2fl.oz./59ml.

HW-3 8fl.oz./236ml. HW-4 16fl.oz./473ml.

Ivory Hint of yellow provides natural aging on dark brown or black hair.

HI-1 1fl.oz./29ml. HI-2 2fl.oz./59ml.

HI-3 8fl.oz./236ml. HI-4 16fl.oz./473ml.

Midnite Black Completely blackens hair for dramatic effects.

Caution: Black Hair Color may smudge. Avoid contact with costume.

MB-1 1fl.oz./29ml. MB-2 2fl.oz./59ml.

MB-3 8fl.oz./236ml.

Crepe Wool Hair

Create facial hair and more with this wool fiber, a standard in the industry. One-yard length is enough to lay several moderate beards. For expert tips, watch Web Phillips demonstrate hair laying techniques in our instructional DVD, "How to Lay a Crepe Wool Beard" (page 31). WH 1 yard/36"/91.4cm.



Tooth Colors

Black creates broken or chipped teeth. *Nicotine*, *Decay* or *Zombie Rot* simulates poor dental hygiene. Apply to dry teeth and allow to dry for a few minutes. Reapply as needed. Clean with alcohol on swab and brush clean. Will not stain denture material. Expect 20-50 teeth. .125fl.oz./3.5ml.

TC-0 Natural White TC-1 Black TC-2 Nicotine
TC-3 Zombie Rot TC-4 Decay



Bronzing Body Tint

Designed for Yul Brynner for the film, "The King and I". Apply with a *Hydra Sponge* in several layers for richer color. Water-resistant. Remove with *Hydra Cleanse* or soap and water. Expect 3-8 applications per ounce.

BT-0 1fl.oz./29ml.

BT-1 2fl.oz./59ml.

BT-2 8fl.oz./236ml.

BT-3 16fl.oz./473ml. Jug

Glycerin

Keep handy to simulate tears, perspiration or "oozing" from wounds. Caution: Keep out of eyes. Expect 10-60 applications per ounce.

GL-2 2fl.oz./59ml.

GL-8 8fl.oz./236ml.



BLOOD & CHARACTER EFFECTS



Stage Blood

Graphically real for all genres. Authentic, vivid arterial coloring in a medium viscosity. Corn syrup based, peppermint flavor is safe for use in the mouth. Washes from most fabrics and surfaces; test before use.

Expect 12-30 applications per ounce.

- | | | |
|--------------------------|--------------------------|--------------------|
| SB-2 .5fl.oz./14ml. | SB-3 1fl.oz./29ml. | SB-4 2fl.oz./59ml. |
| SB-45 4fl.oz./118ml. | SB-5 8fl.oz./236ml. | |
| SB-6 16fl.oz./473ml. Jug | SB-7 32fl.oz./946ml. Jug | |

Dark Blood

Resembles darker venous color for "aged" blood effects. Perfect for zombies and the undead. Identical to *Stage Blood*, with the same "Zesty Mint" flavor and viscosity. Safe for use in the mouth. Washes from most fabrics and surfaces; test before use. Expect 12-30 applications per ounce.

- | | |
|---------------------------|---------------------------|
| DSB-2 .5fl.oz./14ml. | DSB-3 1fl.oz./29ml. |
| DSB-4 2fl.oz./59ml. | DSB-5 8fl.oz./236ml. |
| DSB-6 16fl.oz./473ml. Jug | DSB-7 32fl.oz./946ml. Jug |



Complete Blood Pack

All you need to create oozing, trickling or projectile blood-from-the-mouth effects.

Twelve applications per Pack.

GB-0 Twelve Capsules, .5fl.oz. Stage Blood.

Gelatin Blood Capsules

Fill capsule with blood and bite down to release blood. Filled *Capsules* may be stored for several days. Single use capsules.

GB-1 10 Capsule Pack GB-2 32 Capsule Pack

Plains Dust

Apply for dirt. Smear on and spritz with water or *Glycerin* for muddy, splatter effects.

Expect 10-20 applications per ounce.

- MP-4 .75oz./21gm. Mini Shaker
PD-1 4.5oz./127gm. Jar
PD-2 10oz./283gm. Jar



Thick Blood

Arterial colored gel-like blood. "Scrape" along skin with a stipple sponge for an instant abrasion or road rash. Remove with *Hydra Cleanse* or soap and water. Corn syrup content. May stain some fabrics; test before use.

Expect 10-35 applications per ounce.

- TB-0 .5oz./14gm.
TB-1 1oz./28gm.
TB-2 6oz./170gm.
TB-3 16oz./454gm.



Fresh Scab

Realistically simulates aged, dried blood clots. Top layer "sets" to touch. Remove with *Hydra Cleanse* or soap and water. Corn syrup content. May stain some fabrics; test before use. Expect 10-35 applications per ounce.

- TS-1 1oz./28gm. TS-2 6oz./170gm. TS-3 16oz./454gm.



Effects Gel Wound Kit

Blood, Scar and Flesh Gels create blisters, lacerations, scars and more. Wounds may be pre-made on a smooth surface (mirror or stainless palette) and applied when needed. Detailed instructions included.

Expect 30-50 applications per ounce.

GE-10 Three 1fl.oz./29ml. Bottles GE-11 Three 2fl.oz./59ml. Bottles

Effects Gels

Realistic gels produce durable self-made wounds, burns and scars. Warm until gel turns to a liquid. Create wound and allow to "set" as it cools. Once set, will not transfer or smear. Expect 3-50 applications per ounce.

- | | | | |
|------------------|------------|--------------------|-----------|
| 1 fl.oz./29 ml.: | GE-1 Blood | GE-3 Flesh (Clear) | GE-5 Scar |
| 2 fl.oz./59 ml.: | GE-2 Blood | GE-4 Flesh (Clear) | GE-6 Scar |

Charcoal Powder

Smudge on for a "grease stain". Dust into burns, at edges of a bullet hole or onto road rash effects.

Expect 10-20 applications per ounce.

- MP-5 .75oz./21gm. Mini Shaker
CM-1 4.5oz./127gm. Jar
CM-2 10oz./283gm. Jar

Ash Powder

Resembles wood or charcoal ash. 100% pigment content.

Expect 10-20 applications per ounce.

- MP-8 1oz./28gm. Mini Shaker
AP-1 6oz./170gm. Jar
AP-2 14oz./396gm. Jar

MOULAGE KITS

Master Moulage Kit

Civilian and military EMT trainers endorse Ben Nye's *Master Moulage Kit* for practical ease of use and graphic results. Comprehensive components include all the makeup materials and tools needed to create hundreds of simulated lacerations, burns, abrasions, broken bones, cyanosis and more for mass casualty scenarios. Trainers from the U.S. Coast Guard, Army and ER Nurses assisted in developing specialty shades and materials for maximum effect. Components are packed in a heavy-duty carrying case for easy transport.

MK-1 KIT CONTENTS: Trauma Simulation Guide, Three-color Trauma Simulation, Six-color Master Disaster, (2) Six-color Master Bruise and (2) Four-color Burns & Blisters Wheels, (2) Cyanosis and (1) Cyanosis Grey Foundations, Fair, Olive

and Brown Foundations, Gel Wound Kit, 32oz./946ml. Stage Blood, (2) 2oz./59ml. Stage Bloods, Blood Powder Concentrate, Thick Blood, Red and Purple Pressed Bruise Colors, Modeling Wax (Fair), Charcoal Powder, Liquid Latex, (2) Glycerin, (2) Jagged Cut, (6) Bullet Holes, 1" Exit Wound and 4" Laceration Prosthetics, (2) Neutral Set Powders, (2) Final Seal Makeup Sealers, (3) Spirit Gum Adhesive, Remove-it All Remover, Scissors, (2) Wooden Modeling Tools, (4) FB-10 Flat Brushes, (4) FB-7 Flat Brushes, (2) Rouge Brushes, Foam Sponges, Stipple Sponges, Powder Puffs, Cotton Swabs, Cotton Balls, Wooden Tongue Depressors, (2) Spritzer Bottles, Carrying Case.



Basic Moulage Training Kit

This essential makeup assortment contains materials effective for training of emergency medical responders. Realistic simulations heighten first-aid training for scouting, nurses and public safety organizations. *Basic Training Kit* includes sufficient makeup materials to create dozens of lacerations, wounds, burns, cyanosis, fractures and more.

MK-3 KIT CONTENTS: Trauma Simulation Guide, Six-Color Master Bruise Wheel, Four color Burns & Blister Wheel, Cyanosis Foundation, Stage Blood, Gelatin Blood Capsules (10 Pack), Thick Blood, Modeling Wax in Fair Skin Tone, Simulated Bone Wax, Liquid Latex, Charcoal Powder, Plains Dust, Neutral Set Powder, Reusable 2" Latex Laceration, (2) Spirit Gum Adhesive, Spirit Gum Remover, Quick Cleanse Makeup Remover, Brushes, Foam Sponges, Stipple Sponges, Powder Puffs, Modeling Tool, Cotton Swabs, Carrying Case.



CREME & CAKE MAKEUP KITS

Instructors, makeup artists and performers rely on Ben Nye's Creme Kits for their practicality, quality and excellent value!



Creme Makeup Kit

Creme Kits are a standard for class and production. Products are intensely pigmented, easy to blend and provide exceptional design options.

The series contains a contemporary selection of creme foundations, rouges, highlights and shadows formulated in a richly pigmented, velvety texture. Creme makeups are gentle and easy to use.

Seven specific skin tone combinations are offered. Quality components in generous full sizes cover straight, beauty, old age and special effects makeups. Expect ample makeup for dozens of applications for instruction and theatrical productions.

Many of Ben Nye's distinctive specialty products are included, such as *Stage Blood*, *Liquid Latex*, *Nose & Scar Wax*, *Translucent Face Powder*, *Hair Color* and more. Professional quality brushes, sponges, powder puff and pencils assure expert application. Consult your local dealer for pricing.

Select from the following Kits:

TK-1 Fair: Light-Medium	TK-3 Olive: Light-Medium	TK-5 Brown: Light
TK-2 Fair: Medium-Tan	TK-4 Olive: Medium-Deep	TK-6 Brown: Medium
		TK-7 Brown: Dark

Component selection based on skin tone: Three Creme Foundations, Creme Contour Wheel (Cheek Rouge, Lip Color and two Creme Colors), Bruise & Abrasions Wheel, Highlight, Shadow, White Creme Color, Powder Cheek Rouge, Lip Pencil, Eyebrow Pencil, Black Pencil, Liquid Latex, Nose & Scar Wax, Hair Color, Translucent Face Powder, Spirit Gum Adhesive, Spirit Gum Remover, Dark Blood, Rouge Brush, Velour Powder Puff, Sponge Applicators, Stipple Sponge, No. 3 Flat Brush, No. 7 Flat Brush, Eyebrow/Lash Comb, Swab Applicators.



Cake Makeup Kit

Cake Makeup Kits include water-activated Color Cake Foundations and *MagiCake Aqua Paint* contours, plus a generous range of products including creme contours and effects colors, and useful accessories and tools.

Three kits are designed to complement fair, olive and brown complexions. This generous ensemble provides enough makeup for dozens of straight, beauty and character designs.

Select from three Kits:

TK-11 Fair Skintone
TK-12 Olive Skintone
TK-13 Brown Skintone

PERSONAL & PRODUCTION KITS, INSTRUCTIONAL DVD

Creme Personal Kits

Creme Personal Kits offer professional quality, superior selection and affordable pricing. Kits perform brilliantly for stage, dance recitals, choral groups, and in front of the camera with practical makeup basics. Highly pigmented, smooth-textured *Creme Foundation* and *Contour Palette* with shadow, highlight, rouge and lip color, apply easily and withstand the rigors of heat, intense lighting and high energy performances.

Kits include a generous supply of the makeup components listed below, adequate for several rehearsals and performances. Replacement shades and tools are available from Ben Nye's full line.

Creme Foundation
Creme Contour Palette
(includes Highlight,
Shadow, Rouge, Lip Color)

Face Powder
Eye Pencil
Flat Brush

Powder Puff
Sponge Applicator
Stipple Sponge

Select from eight Kits designed with carefully selected shades to match skin tone. *Personal Kits* assure each actor the benefit of strict hygiene at an affordable price.

PK-0 Fair: Lightest
PK-1 Fair: Light-Medium
PK-2 Fair: Tan

PK-3 Olive: Fair-Medium
PK-4 Olive: Deep

PK-45 Brown: Light
PK-5 Brown: Medium
PK-6 Brown: Dark



Master Production Kit

Professional makeup artists, instructors, actors and photographers rely on the *Master Production Kit* for incomparable quality and product selection. It is ideal for film, digital and theatrical productions with a useful selection of makeup for simple character, beauty and effects.

Five *Matte HD Foundations* complement complexions from fair to brown tones. The Kit includes useful *Creme Highlights*, *Shadows* and *Concealers* to neutralize discolorations and correct facial features. Finishing products, such as *Eye Shadows*, *Pencils*, *Powder Rouge*, *Bruise & Abrasion Wheel*, *Blood*, *Face Powder* and other tools complete this practical ensemble. **FK-1**



Instructional DVD

The Classic Series: "Makeup for the Theatre"

Expert makeup instructors clearly demonstrate the fine points of makeup artistry. Six lessons are designed for classroom instruction (approximately 50 minutes per lesson) with detailed summaries at the conclusion of each. Bonus feature: Retrospective on Ben Nye, Sr.'s makeup artistry career. Closed captioned. Six lessons include:

Basic Corrective Male
Old Age Character
How to Apply A Bald Cap

Corrective Beauty for Female
3-D Special Effects
How to Lay A Crepe Wool Beard

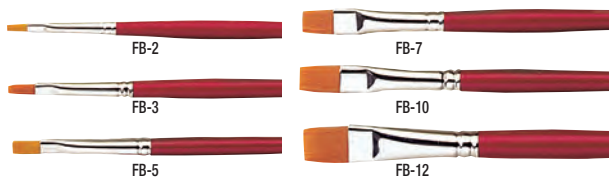
MAKEUP BRUSHES, APPLICATORS & TOOLS

Flat Brushes

Expertly blend *Cremes*, *MagiCake Aqua Paint* and *Lumière Grande Colours* with these synthetic fiber brushes, which closely resemble the "snap" of sable hair.

Taklon offers easy clean-up and long-life. **Taklon**

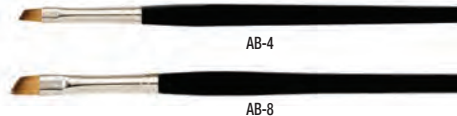
FB-2 No. 2 - 3/32"/3mm FB-5 No. 5 - 1/4"/6mm FB-10 No. 10 - 3/8"/10mm
FB-3 No. 3 - 5/32"/4mm FB-7 No. 7 - 5/16"/8mm FB-12 No. 12 - 7/16"/12mm



Angle Brushes

Precise, angled application for eye shadow, eye liner, brow coloring and lipstick. **Taklon**

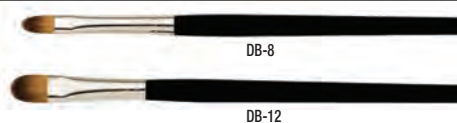
AB-4 Medium AB-8 Wide



Dome Brushes

Subtle, delicate brush excellent for creme concealer or eye shadow. Rounded corners allow for softened edges during application. **Taklon**

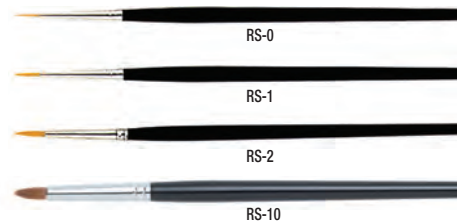
DB-8 Medium DB-12 Wide



Round Brushes

Great for any makeup that requires fluid application such as *Cake Eye Liners*. Use the RS-1 and RS-2 for precision lining and fine details.

RS-0 No. 0 Extra Fine / Sable RS-1 No. 1 Fine / Taklon
RS-2 No. 2 Small / Taklon RS-10 No. 10 Large / Sable Blend



Fine Detail Brushes

Petite Powder

Generous, tapered shape applies powder or pressed colors to face and eyes.

FDB-1 / Pony

Tapered Point Brush

For blending and contouring of eye shadows, *Lumière*, powders and glitter.

FDB-2 Medium / Pony Blend

FDB-3 Small / Pony Blend

Petite Shader

Small round-edged brush for delicate eye shadow or powder detailing and contouring.

FDB-4 / Sable Blend

Medium Blender

Soft, but firm chiseled-edge bristles for precise, even blending of powders.

FDB-5 / Sable Blend

Petite Filbert

Classic rounded shape in mini size for precise application of cremes, liquids or powders.

FDB-6 / Sable Blend

Lip Brush

Finely tapered, petite shape for defined application of lip colors and glosses.

FDB-7 Lip Brush with Cover / Taklon

FDB-71 Compact Lip Brush / Taklon
(pictured with *Lip Colour Palettes* on page 14).

Smudge Brush

Excellent for smudging and blending eye shadow and smokey liners.

FDB-8 / Pony

Mini Flat Liner

Perfect for lining and painting details. Firm body with tapered tip.

FDB-9 / Sable Blend



Pencil Sharpeners

Single unit sharpens to a defined point.

Dual Hole unit sharpens both *Pencils* and *Crayons*.

SP Single Hole Sharpener

DP Dual Hole Sharpener



Brow/Lash Comb

Use to separate lashes, style brows or streak facial hair and temples with hair color for aging. **EC**

Personal Rouge Brush

Full bristled, short-handled personal size rouge brush.

RB-11 / Goat



Foundation and Contour Brushes

Rounded, tapered edges and soft synthetic fibers provide exceptional versatility and blending qualities. Excellent for application of creme-style foundations, *Neutralizers*, pressed colors, liquids and wet cake makeup, including *Lumières*.

The *FCB-20 Foundation* and *FCB-24 Wide Foundation Brushes* blend creme-style foundations to a sheer, smooth finish. **Taklon**

FCB-16 Medium Contour 9/16"/14mm

FCB-18 Wide Contour 3/4"/19mm

FCB-20 Foundation 7/8"/22mm

FCB-24 Wide Foundation 1 1/4"/28mm



Rouge Brushes

Professional Rouge

Generous, full shape provides quick application of powders to face and body. **RB-2 / Goat**

Touch-Up

Beveled shape for precise powder application, especially useful around eye area. **RB-3 / Goat**

Angle Rouge

Flat-topped, angled shape is great for precise application of powders and rouge. **RB-4 / Goat**

Contour Shader

Tapered shape provides precise application of pressed contours and shimmer powders. **RB-5 / Goat**

Powder Brush

Luxurious size deftly adds powder or gently removes excess without disturbing makeup. **PA-1 / Goat**



Stainless Steel Spatula Use to mix makeup on a palette or apply *Nose & Scar Wax*, *Thick Blood* or *Gel Effects* to skin. **ST-1, 7" (1 1/4"/47mm Blade)**

Tapered Spatula Flat, flexible stainless blade with wood handle. Perfect multi-purpose tool for blending, smoothing, scoring, etc. Wipe clean with alcohol. **ST-4, 3.25"/85mm Blade**

Blending Spatula "Trowel" style palette spatula for efficient blending. Flexible, stainless blade with wood handle. Wipe clean with alcohol. **ST-5, 2.5"/63mm Blade (from bend)**

Wooden Modeling Tool Versatile application tool to model *Nose & Scar Wax*, *Thick Blood* and *Effects Gels*. **MT-1 Natural Wood**



Foam Sponge Expertly apply and blend cremes with our finely textured sponge. Eight die-cut wedges per block. Synthetic, disposable. **LF-1 Single Lot, LF-2 Dozen Pack**



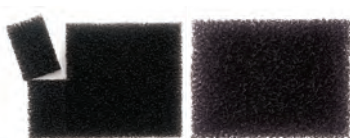
Hydra Sponge Durable synthetic sponges efficiently spread *Color Cake* and *MagiCake*. Medium size is optimum for body makeup. Washable. **HS-1 Small, HS-3 Medium**



Velour Powder Puffs

Soft, luxurious, double-sided velour puff. Washable.

VP-1 Single Lot, VP-2 Dozen Pack



Stipple Sponge Eight sections per die-cut block. Create beard stipple, bruising, road rash and texture. Disposable.

Fine Pore: FNS-1 Single Lot, FNS-2 Dozen Pack
Medium Pore: NS-1 Single Lot, NS-2 Dozen Pack



Artist's Mixing Palette Ample size with a convenient finger hole. Sanitize with alcohol.

MXP-2 5.5" x 6.5" White Plexiglas

Stainless Steel Palette Convenient for blending. Transfer makeup to Palette from container for hygiene.

MXP 3.5" x 5" Stainless.

Foam Tip Applicators Soft foam tipped applicators for pressed colors. Washable.

FB-11 10 Pack, FB-111 25 Pack.

Swab Applicators Cotton-tipped, disposable applicators have 1,001 uses. One pointed, one round tip.

SW-11 Pack of ten.

CREDITS

Beauty Makeup

MAKEUP **Spencer Barnes**

MAKEUP ASSISTANT **Caitlin Cassidy**

HAIR **Nguyen "Noogie" Thai**

STYLIST **Michael Cioffoletti**

Page 8

Queen Elizabeth I

MAKEUP & WIG **Rick Geyer**

MAKEUP ASSISTANT **Vanessa Dionne**

COSTUME STYLIST **Peter A. Lovello**

Page 17

Lumière Eye

MAKEUP **IpacSzilvi**

Page 22 & 27

Queenie, Tatiana, Evileena, Merchant of Nye and Hobo Pete

MAKEUP & WIGS **Rick Geyer**

COSTUME STYLIST **Karen Hudson**

Ghoul

MAKEUP **Barry Koper**

COSTUME STYLIST **Karen Hudson**

Page 29

Disaster Simulation

MAKEUP **Marge Dolan**

Image Perspectives

Photography

BEAUTY **Dominick Guillemot**

PRODUCT & CHARACTERS **Jerry Garns**

ARCHIVE CHARACTERS **Don Lauritzen**

"B ROLL" **Dana Nye**

EDITORIAL **Dana Nye, Patricia Saito-Lewe**

ART DIRECTION **Lombardi Design, Inc.**

PRINTING **ColorNet Press**

Special Thanks to:

**Darren Jinks, Stan Edmonds,
Kevin James (KJ) Bennett, Nan Zabriskie,
Janet Swenson and Debbie Muller**
for their invaluable feedback and wisdom.

Ben Nye, Inc.

3655 Lenawee Avenue
Los Angeles, California 90016 USA
www.bennye.com

© 2012 Ben Nye, Inc. All rights reserved.

