



ETC Smart Solutions™

ETC lighting quality, at a smart price.

ETC's Smart Solutions means simple but powerful portable lighting gear for every event – gigs, industrials, touring productions, school plays, church pageants, festivals, small theaters, and more.

Street smarts. Your own ETC lighting system. Set it up anywhere. Plug in and play, and light like a pro.

There are also compact and affordable Smart Solutions for your permanent lighting needs.

And all Smart Solutions products are backed up by ETC's acclaimed 24/7 customer support.

No production is too small to have great lighting systems by ETC.

*Little consoles with big console attitude.
SmartFade® for dimmers and SmartFade ML™
for moving lights. For beginners or pros.*

SmartFade & SmartFade ML

Three SmartFade versions available for dimmer control: SmartFade 1248, SmartFade 1296 and SmartFade 2496

SmartFade ML for control of up to 48 dimmer channels and 24 moving lights

MIDI In and MIDI Out connectors

24-step sequences for chaser effects

199-step stack for main cue list, playback via crossfaders

SD card slot for show backup



SmartStand™

Great for short-term setups. Put your SmartBars® and fixtures wherever it's most convenient.

Heavy-duty stand rises to maximum height of 12 feet (3.6m)

Fold-away hand crank for gradual height adjustment

Double risers extend simultaneously

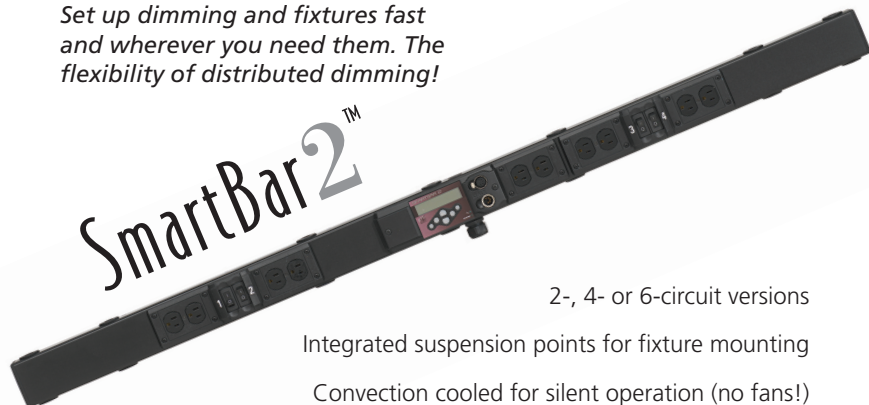
Articulating leg to level the stand on uneven surfaces

Sturdy adjustable footstep

Perfect for hanging SmartBars and Source Fours®!



*Set up dimming and fixtures fast
and wherever you need them. The
flexibility of distributed dimming!*



2-, 4- or 6-circuit versions

Integrated suspension points for fixture mounting

Convection cooled for silent operation (no fans!)

*On the floor, in the
truss, under the set —
the flexibility of
distributed dimming!*



4- or 6-circuit models

Wall- and pipe-mount kits available

Convection cooled for silent
operation (no fans!)



SmartModule 2™

**SmartBar 2 and SmartModule 2
also offer the following options:**

Power*

20A single-phase, bi-phase, or
three-phase

Breaker-output protection per
circuit

Choice of output connectors: dual
Edison, stage pin, Twist-Lock®

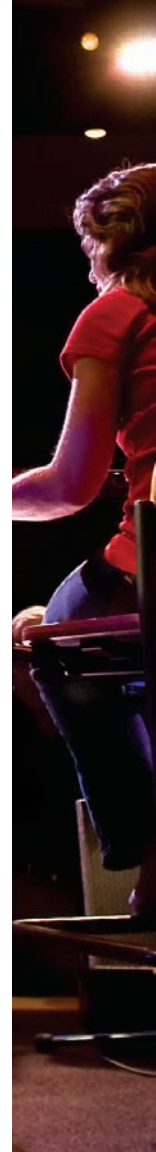
Control

DMX-512 A with RDM remote
addressing

Programmable dimmer curves

Stand-alone operation for local
control and chases

** See last page for model restrictions*



SmartPack[®] with SmartLink[®]

*Compact dimming for the masses!
ETC performance in an economical
unit that fits into any space.*



- 19" 2-space (2U) rack-mount enclosure
- 6 x 20A or 12 x 10A dimmer packs available
- True SCR reliability based on ETC Sensor[®] technology
- Wide range of output-panel options
- Fully-rated all-magnetic circuit breakers
- Built-in presets (32) and sequencer for stand-alone operation
- SmartLink provides pack-to-pack communication of presets and sequences

SmartPack Touring System with SmartLink

*A little road warrior
with professional
power. Take your
lighting show on the
road with acclaimed
ETC dimming.*



- Built-to-travel roadcase systems
- 2- or 4-pack systems available
- Cam-Lok[®] power input – three-phase/single phase
- Circuit-breaker power distribution per pack
- Optional main breaker and Cam-Lok Feed Thru
- SmartLink provides pack-to-pack communication of presets and sequences



*The economical power
and flexibility of
SmartPack® dimming in a
sleek permanent unit.*

SmartPack Wall Mount with SmartLink®

Compact wall-mount unit

6 x 20A or 12 x 10A dimmer packs available

True SCR reliability based on ETC Sensor® technology

Standard output connections via DIN Rail terminals

Fully-rated all-magnetic circuit breakers

Built-in presets (32) and sequencer for stand-alone operation

SmartLink provides pack-to-pack communication of presets
and sequences, with optional stations

*The Smart control solution when you need
no-nonsense 'on-off' relay functionality for any light.*

SmartSwitch® with SmartLink

Smart compact cabinet holds up to 48 relays

Rugged steel industrial enclosure

Manual or DMX control of relays

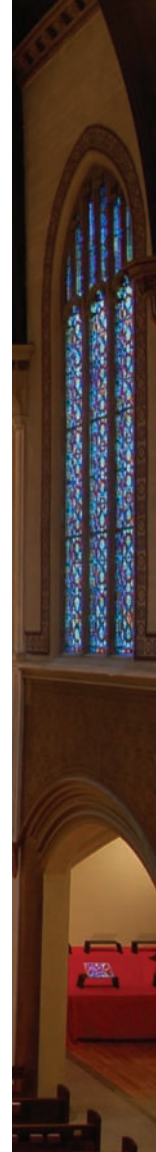
Mechanically latching 20A
H.I.D.-rated relays

Single-pole (120/277V) and
double-pole relays (208/240V)

Supports multiple load types

Relays can be added in the field

SmartLink provides pack-to-pack
communication of presets and
sequences, with optional stations





*Recall lighting looks
with a push of a
button. Cost-saving
lighting control for
basic applications.*

SmartLink®

Remote control of presets and sequences in
SmartPack® and SmartSwitch®

5-button or 10-button stations

SmartLink network – two-wire, topology-free

Up to four stations without additional power supply

Station addressing via eight-position dipswitch

Stations available in white, ivory, gray, black, or
signal white

Timeclock for timed activation of presets and
sequences

Smart Solutions ordering information

Descriptions

Models

SmartFade® 2496, 96 Channel Console SF2496
SmartFade 1248, 48 Channel Console SF1248
SmartFade 1296, 96 Channel Console SF1296
SmartFade ML™, 48 Dimmer Channel +
24 Moving Light Console SFML

SmartStand™ crank-up lighting support with adapter . . . ST

SmartBar 2™, 2 x 10A (1200W) SB2-10
SmartBar 2, 4 x 10A (1200W) SB4-10
SmartBar 2, 6 x 10A (1200W) SB6-10

SmartModule 2™, 4 x 10A (1200W) cable input . . . SM4-10
SmartModule 2, 6 x 10A (1200W)
flange mount Twist-Lock® input SM6-10Z
SmartModule 2, 6 x 10A (1200W) cable input . . . SM6-10

SmartPack, 6 x 20A (2400W). SL620
SmartPack, 12 x 10A (1200W). SL1210

SmartPack Wall Mount Unit, 6 x 20A (2400W). . . SL620W
SmartPack Wall Mount Unit, 12 x 10A (1200W). . SL1210W

Smart Solutions ordering information

Descriptions

Models

SmartPack® Touring System, 2 Pack (12 x 20A) . . . 2XSL620
 SmartPack Touring System, 2 Pack (24 x 10A) . . . 2XSL1210
 SmartPack Touring System, 4 Pack (24 x 20A) . . . 4XSL620
 SmartPack Touring System, 4 Pack (48 x 10A) . . . 4XSL1210

SmartSwitch®, 12 x 20A Relays with

Link Power Supply SS-121P-LPS

SmartSwitch, 12 x 20A Relays SS-121P

SmartSwitch, 24 x 20A Relays with

Link Power Supply SS-241P-LPS

SmartSwitch, 24 x 20A Relays SS-241P

SmartSwitch48, 48 x 20A Relays SS-48-1P

SmartSwitch48, 48 x 20A Relays with

LinkPower Supply SS-48-1P-LPS

SmartLink® 5-Button Station S-10005

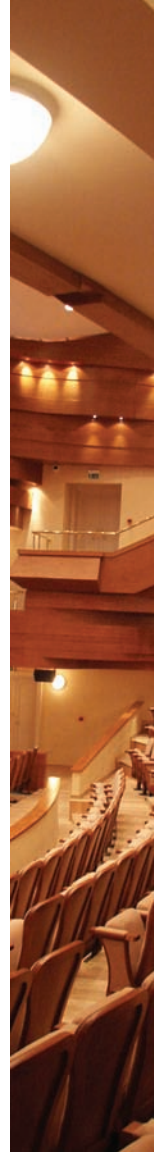
SmartLink 10-Button Station S-10010

SmartLink Timeclock SL-ATC

To indicate the type of output connector on SmartBars®, SmartModules® and SmartPacks, refer to the table below and add the appropriate suffix to the Model Number.

		SmartBar 2 - 2	SmartBar 2 - 4	SmartBar 2 - 6	SmartModule 2 - 4	SmartModule 2 - 6	SmartPacks
Outputs							
Edison	-A	●	●	●	●	●	●
Stage Pin	-B	●	●	●	●	●	●
Grounded Twistlok	-C	●	●	●			●
MultiPin	-V				●	●	
Powercon	-P						●
Terminals	-TM						●
Color							
White	-1	●	●	●			
Black		●	●	●	●	●	●
Inputs							
12 - 3 cable		●	●		●		
12 - 4 cable	X		●	●	●		
12 - 5 cable	Y			●		●	
GTL connector	Z					●	
Terminals	-TM						●
Wall Mount	-WM				*	*	●

* Optional wall-mount kit.





Corporate Headquarters ■ 3031 Pleasant View Rd, PO Box 620979, Middleton WI 53562 0979 USA ■ Tel +1 608 831 4116

London, UK ■ Unit 26-28, Victoria Industrial Estate, Victoria Road, London W3 6UU, UK ■ Tel +44 (0) 20 8896 1000

Rome, IT ■ Via Pieve Torina, 48, 00156 Rome, Italy ■ Tel +39 (06) 32 111 683

Holzkirchen, DE ■ Ohmstrasse 3, 83607 Holzkirchen, Germany ■ Tel +49 (80 24) 47 00-0

Hong Kong ■ Room 1801, 18/F, Tower 1 Phase 1, Enterprise Square, 9 Sheung Yuet Road, Kowloon Bay, Kowloon, Hong Kong ■ Tel +852 2799 1220

Web ■ www.etccconnect.com ■ Copyright © 2011 ETC. All Rights Reserved. All product information and specifications subject to change. 7501L1002 Rev. E Printed 10/11