

GENERAL INFORMATION

ETC's SC1008 Branch Circuit Emergency Lighting Transfer Switch (BCELTS) is designed to automatically switch a single 20A, 120V or 277V lighting load from a normal power source to an emergency power source when there is a power failure or other emergency situation present.

APPLICATIONS

- Any emergency lighting application that requires UL1008 emergency transfer of a branch circuit

FEATURES

- UL1008 listed for NEC 700, 701 emergency lighting applications
- Single 120-277V, 20A power input
- Interlocked break-before-make relays
- Control bypass relay for 0-10V or DALI controlled circuits
- Continuous monitoring of normal and emergency power
- Field-selectable normally open (NO) or normally closed (NC) dry contact fire alarm input
- Convenient and clearly marked contractor terminations
- NEMA 1 rated enclosure
- Laser sensor test switch
- Push button test switch

ORDERING INFORMATION

SC1008

MODEL	DESCRIPTION
SC1008	Branch Circuit Emergency Lighting Transfer Switch (BCELTS)

Related UL1008 Emergency Products

MODEL	DESCRIPTION
ELTS2	Emergency Lighting Transfer System

Related UL924 Emergency Products

MODEL	DESCRIPTION
DEBC-1	DMX Emergency Bypass Controller, 1-output
DEBC-6	DMX Emergency Bypass Controller, 6-output
ALCR	Automatic Load Control Relay (DIN and Power pack)

Sense Feed Loss Detection

MODEL	DESCRIPTION
EBDK	Emergency Bypass Detection Kit



## SPECIFICATIONS

## LISTINGS AND APPROVALS

- ANSI/UL 1008 Listed Branch Circuit Emergency Lighting Transfer Switch (BCELTSS) / Automatic Transfer Switch for use in emergency systems
  - Category code WPWR
  - UL File E157852
- Complies with Standard CSA C22.2 No. 178 TRANSFER SWITCH EQUIPMENT
- Complies with ANSI/NFPA 110, Standard for Emergency and Standby Power Systems
- Satisfies requirements of the National Electric Code (NFPA 70):
  - Article 700 – Emergency Systems
  - Article 701 – Legally Required Standby Systems
  - Article 702 – Optional Standby Systems
  - Section 518.3C – Assembly Occupancies
  - Section 520.8 – Theatres and Similar Locations
  - Section 540.11C – Motion Picture Projection Rooms
- Self-contained system for one circuit

## MECHANICAL

- NEMA 1 rated steel enclosure
- Wall mount unit with adjustable mounting plate
- Finished in a fine-textured, scratch resistant epoxy paint
- Front access to wiring space for easy contractor connections – clearly marked termination strips
- Conduit entry via top, bottom, or right side (see manual)

## OPERATION

- When normal power is lost with the presence of an emergency source, the normal source is disconnected from the load and the emergency source is connected to the load
- When normal power is restored, the emergency source is disconnected from the load and normal source is connected to the load
- Monitors voltage on normal feed branch circuit
- Emergency state control priority:
  - 1 – Power Failure
  - 2 – Fire Alarm/contact activation

## SPECIFICATIONS

## ELECTRICAL

## Normal Feed Input:

- Single phase 120-277 VAC circuit, up to 20 Amps
- Additional terminal provided for constant normal power sense feed when circuit is fed by a dimmer or controlled circuit
- Terminals sized for 10-18 AWG wire
- Circuit fed from a remote panel (supplied by others)

## Emergency Source Feed:

- Single phase 120-277 VAC circuit, up to 20 Amps
- Circuit fed from a remote breaker panel (supplied by others)

## Short Circuit Protection:

- Class G Short Circuit Current Rating (SCCR) protection rated for 10,000 Amps RMS symmetrical
- Rated for a continuous load
  - 2400W per circuit at 120V
  - 5440W per circuit at 277V
- Fuse protection to allow listed use with any circuit breaker brand
- Current protection located on load side of contactor, and protects both normal and emergency source feeds

## Operation

- Switches hot(line) and neutral conductors
- Electrically interlocked to ensure normal power is fully disconnected before emergency power is applied
- Mechanically maintained (held) contactor

## Fire Alarm Input

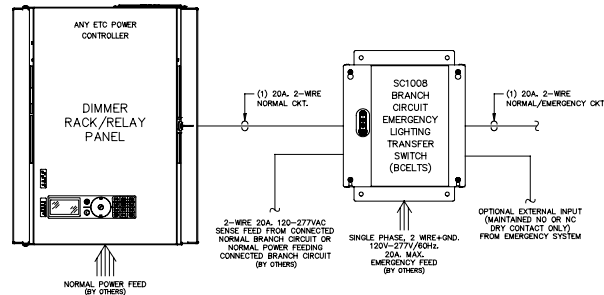
- Field configurable normally closed (NC) or normally open (NO) dry contact input
- Input terminals accept 10–20 AWG class 2 connection from alarm panel
- Up to ten SC1008 can be wired in series to a single contact relay
- Maximum total wire length between contact relay and SC1008 units is 1,000 feet (300m)

## User Controls

- Front panel local control includes a test button, laser test sensor, and 2 LED status indicators for presence of normal and emergency power

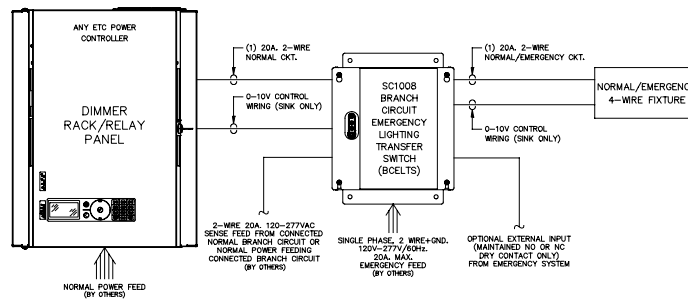
### SC1008 BRANCH CIRCUIT ELTS TYPICAL SYSTEM RISERS

#### LINE VOLTAGE DIMMED CIRCUIT



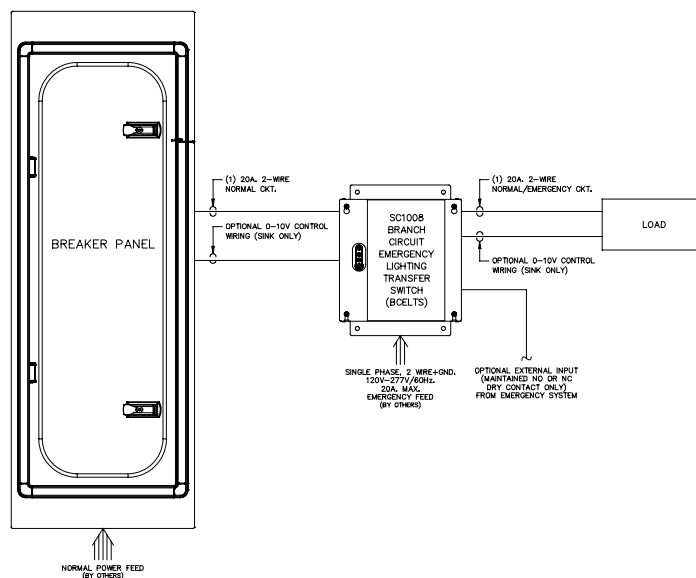
NOTE: WHEN NORMAL POWER SENSE OF A BRANCH CIRCUIT WITHIN AN ETC SENSOR OR DRd DIMMER RACK IS REQUIRED BY THE AUTHORITY HAVING JURISDICTION, ETC REQUIRES THE USE OF A D20FB MODULE TO PROVIDE BOTH DIMMED POWER AND SENSE FEED TO THE BCELTS.

#### 0-10V CONTROLLED CIRCUIT



NOTE: WHEN NORMAL POWER SENSE OF A BRANCH CIRCUIT WITHIN AN ETC SENSOR OR DRd DIMMER RACK IS REQUIRED BY THE AUTHORITY HAVING JURISDICTION, ETC REQUIRES THE USE OF A D20FB MODULE TO PROVIDE BOTH DIMMED POWER AND SENSE FEED TO THE BCELTS.

#### BREAKER OR RELAY FED CIRCUIT



PHYSICAL

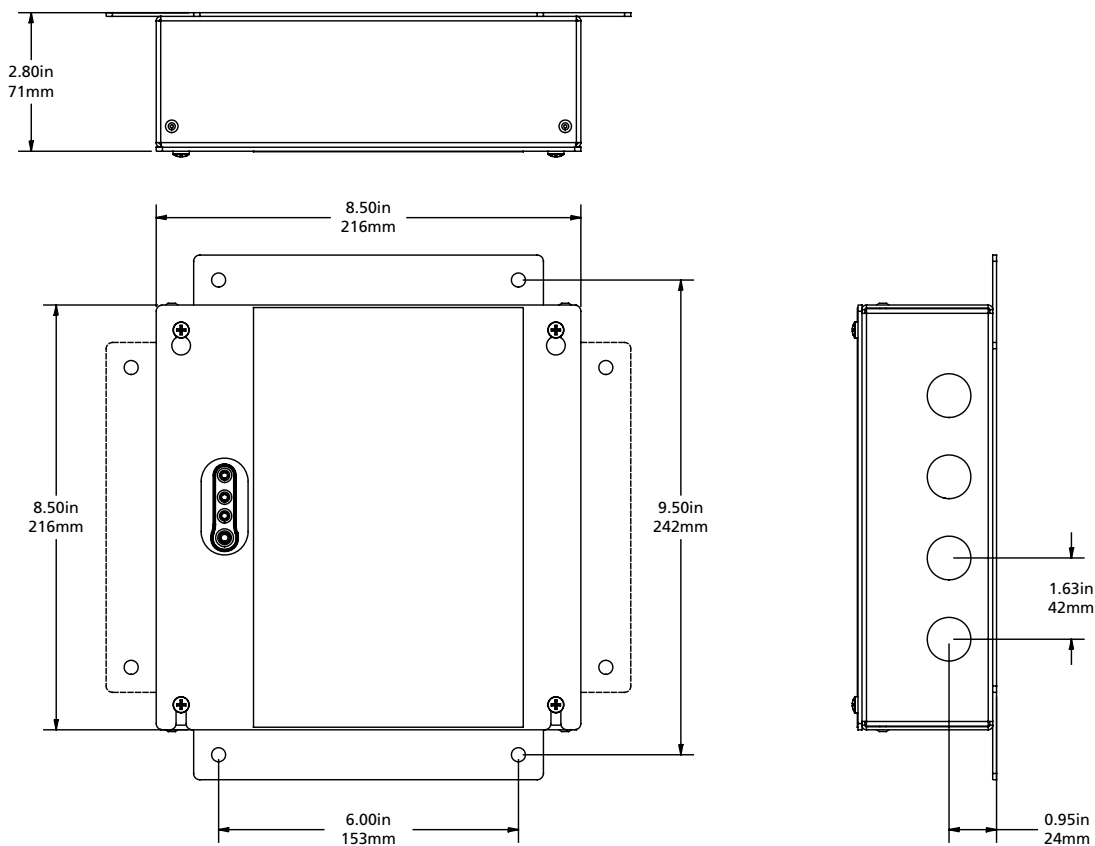
Dimensions

MODEL	HEIGHT		WIDTH		DEPTH	
	inches	mm	inches	mm	inches	mm
SC1008	8.50	216	10.50	267	2.75	70

Weights

MODEL	WEIGHT		SHIPPING WEIGHT	
	lbs	kgs	lbs	kgs
SC1008	6.2	2.8	7.2	3.3

SC1008



**Corporate Headquarters** • 3031 Pleasant View Rd, PO Box 620979, Middleton WI 53562 0979 USA • +1 608 831 4116  
**London, UK** • Unit 26-28, Victoria Industrial Estate, Victoria Road, London W3 6UU, UK • +44 (0) 20 8896 1000  
**Rome, IT** • Via Pieve Torina, 48, 00156 Rome, Italy • +39 (06) 32 111 683  
**Holzkirchen, DE** • Ohmstrasse 3, 83607 Holzkirchen, Germany • +49 (80 24) 47 00-0  
**Hong Kong** • Room 1801, 18/F, Tower 1 Phase 1, Enterprise Square, 9 Sheung Yuet Road, Kowloon Bay, Kowloon, Hong Kong • +852 2799 1220  
**Web** • etconnect.com • Copyright©2018 ETC. All Rights Reserved. All product information and specifications subject to change. 7180L1051 Rev C 01/18