

# ETC Source Four Mini LED™

Good things really do come in small packages.

**Big Source Four attitude, small size... now in an LED.**

Get everything you know and love about the ETC Source Four®  
in a footprint that can fit just about anywhere,  
in traditional tungsten or LED.

[www.etconnect.com](http://www.etconnect.com)



Americas ■ Europe ■ Asia  
[www.etconnect.com](http://www.etconnect.com)

# Source Four Mini LED™

CUTE JUST GOT A LOT GREENER

## Tiny fixture, big energy savings

The Source Four Mini LED has the same size, look, optics and beam angles as the Source Four Mini™ tungsten fixture, but with the efficiency and energy savings you've come to expect from an ETC LED light source. With its distinctive long-life, 35,000-hour, 12W LED, the Source Four Mini LED not only uses less power than a traditional tungsten fixture, but it's also brighter so you don't have to sacrifice output for energy savings. It's the perfect fit for museums, stores, restaurants, lobbies, light labs, theaters and other smaller-scale installations that want to meet new energy codes and regulations.

See what the big deal is at [www.etcconnect.com/Mini](http://www.etcconnect.com/Mini)

### Features for all Source Four Mini models

- 19°, 26°, 36° and 50° field angles
- 9" long, 2.5" diameter
- 12W LED (35,000-hour life)
- Portable, canopy- or track-mount versions
- E-size pattern holder
- Gel media frame
- Rotating barrel ± 175°
- Three-plane stainless steel shutter blade assembly
- Insulated rear handle
- Rugged die-cast aluminum construction
- Black, white, silver or custom colors available
- Available in min. 80 CRI or min. 90 CRI Gallery versions or custom with 4000k or 5000k LED color temperature

### Portable features

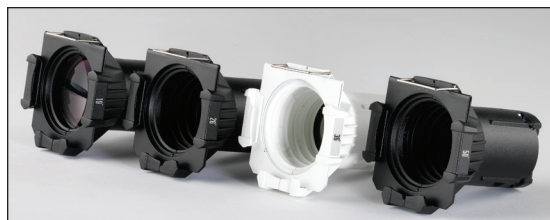
- Yoke-mounted LED driver in a matching color case
- Miniature C-clamp included
- Three-foot power cable and choice of Edison, UK or EU plug

### Canopy-mount features

- 4.5 x 1.5" color-matched canopy
- Canopy-mounting hardware for 4" ceiling junction box included
- LED driver for hardwired (120V or 230/240V) input

### Track-mount features

- ETL Listed and compatible with ETC's DataTrack system
- Factory-installed LED driver in color-matched (black or white) adapter



SOURCE FOUR MINI LED  
PORTABLE



SOURCE FOUR MINI LED  
CANOPY-MOUNT



SOURCE FOUR MINI LED  
TRACK-MOUNT



**Corporate Headquarters** ■ 3031 Pleasant View Rd, PO Box 620979, Middleton WI 53562 0979 USA ■ Tel +1 608 831 4116

**London, UK** ■ Unit 26-28, Victoria Industrial Estate, Victoria Road, London W3 6UU, UK ■ Tel +44 (0) 20 8896 1000

**Rome, IT** ■ Via Pieve Torina, 48, 00156 Rome, Italy ■ Tel +39 (06) 32 111 683

**Holzkirchen, DE** ■ Ohmstrasse 3, 83607 Holzkirchen, Germany ■ Tel +49 (80 24) 47 00-0

**Hong Kong** ■ Room 1801, 18/F, Tower 1 Phase 1, Enterprise Square, 9 Sheung Yuet Road, Kowloon Bay, Kowloon, Hong Kong ■ Tel +852 2799 1220

**Web** ■ [www.etcconnect.com](http://www.etcconnect.com) ■ Copyright©2016 ETC. All Rights Reserved. All product information and specifications subject to change. 7063L1004 Rev B 02/16