

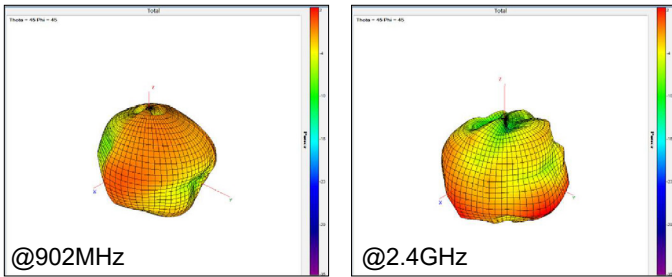


Standard antenna for Multiverse Node and Transmitter products

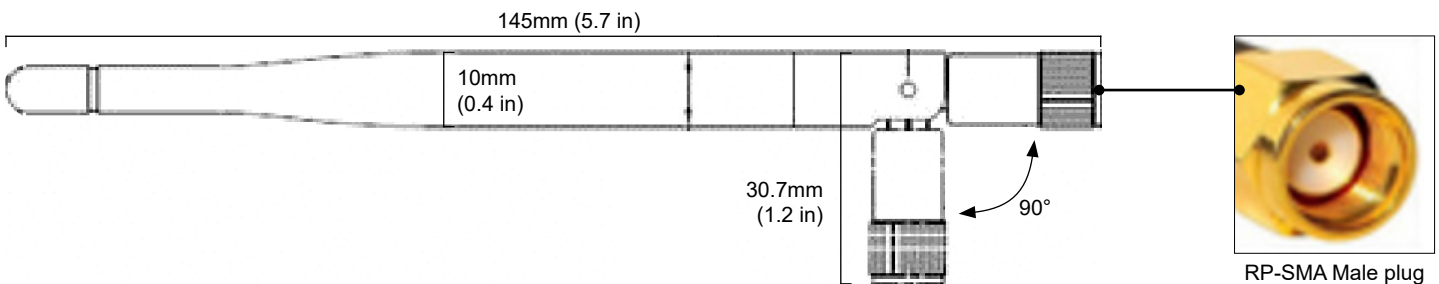
The **2dBi/4dBi Omni Broadband Antenna, 900MHz/2.4GHz, Dual Band** (P/N 5980) is the standard antenna for City Theatrical's Multiverse® Node (P/Ns 5902 and 5903) and Multiverse Transmitter (P/Ns 5910, 5911, and 5912) products. Its connection is made using a RP-SMA male plug.

This Omni-directional Dual Band Antenna allows the user to receive or broadcast on the 2.4GHz (for worldwide use) radio band or the 900MHz (for use in the Americas only) radio band.

Radiation Patterns:



Actual size:



SPECIFICATIONS:

P/N	Frequency
5980	900MHz/2.4GHz

Physical

Length (fully extended)	145mm	(5.7 in)
Width (bent at 90°)	30.7mm	(1.2 in)
Thickness (widest part)	10mm	(0.4 in)

Electrical

Antenna Type	Monopole antenna
Frequency Range	902~928MHz / 2400~2480MHz
V.S.W.R.	<= 2.0
Impedance	50 OHM
Type of Radiation	Omni-directional
Electrical Wave	¼
Frequency/Gain	902~928MHz: 2dBi 2400~2480MHz: 3-4dBi
Polarization	Vertical
Identifying Connector	RP-SMA Male

Product Information

Color	Black
Use Environment	Indoor
Operating Temperature Range	-20°C to + 65°C
Storage Temperature Range	-30°C to + 70°C
IP Rating	IP50
Warranty	One year