

EDIN #4807/4808/4809/4810

EDIN INSTALLATION REPEATER



Model
4808
shown



PRODUCT OVERVIEW

DMX opto-splitters in NEMA1 assemblies for permanent installation. Complete with conduit knockouts and terminal strip connections for fast, easy installation.

SPECIFICATIONS

- 2500V opto-isolation between input and output ports
- 250V fault protection on input and output ports
- 6W power consumption per installed card
- Operating conditions: dry, indoor locations; -10° to 50°C; 10% to 90% relative humidity, non-condensing

FEATURES

- Internally pre-configured and pre-wired, ready for installation
- Four, eight, twelve or sixteen output models
- Up to four inputs, or daisy-chain a single source
- Removable terminal strip connectors
- No fuses—data links self-reset after overcurrent removed
- Wide range power supply (85-240VAC)
- Power, processor and DMX activity LEDs
- Direct pass-through and DMX line termination switch

STANDARDS COMPLIANCE

- ANSI E1.11 DMX512-A
- CE
- RoHS 2002/95/EC
- ETL-listed

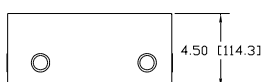
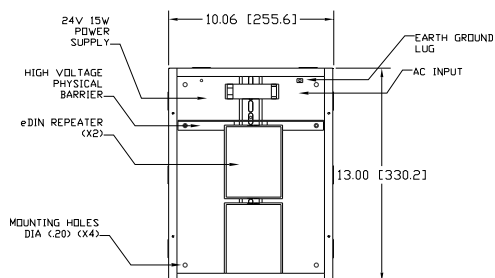
WEIGHTS AND DIMENSIONS

- 4807: 10.25" x 13.25" x 4.5" (260mm x 335mm x 120mm)
9.3 lb shipping weight (4.25 kg)
- 4808: 10.25" x 13.25" x 4.5" (260mm x 335mm x 120mm)
9.8 lb shipping weight (4.5 kg)
- 4809: 10.25" x 23.25" x 4.5" (260mm x 590mm x 120mm)
14.3 lb shipping weight (6.5 kg)
- 4810: 10.25" x 23.25" x 4.5" (260mm x 590mm x 120mm)
14.8 lb shipping weight (6.75 kg)

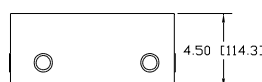
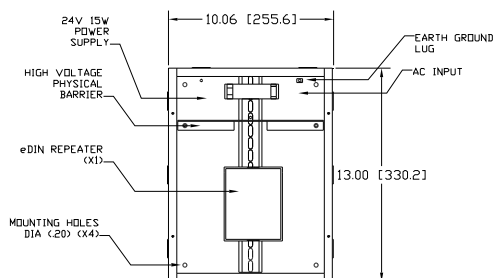
INCLUDED FURNISHINGS

- Installation/Operations manual

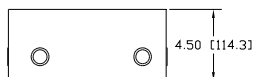
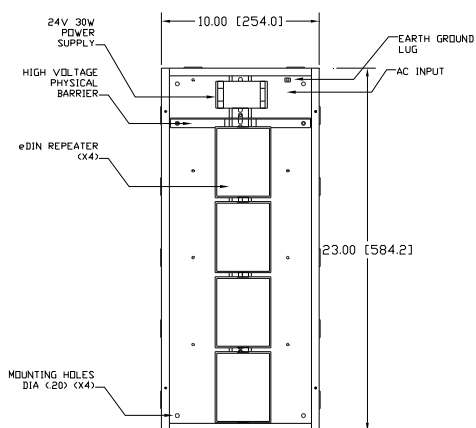
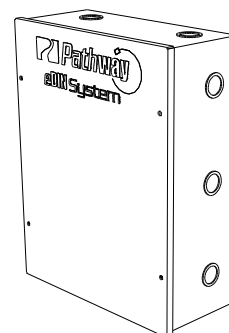
DIMENSIONS



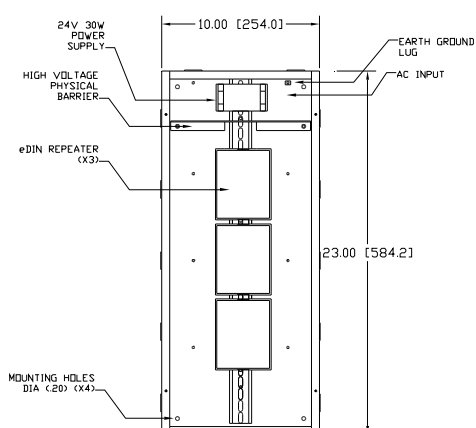
#4808



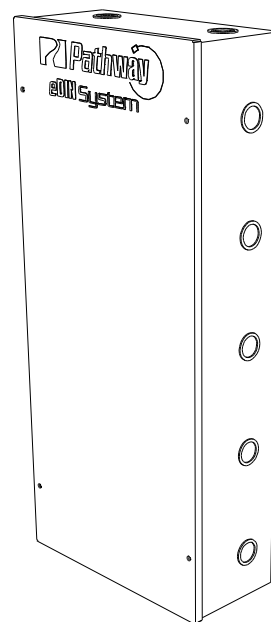
#4807



#4810



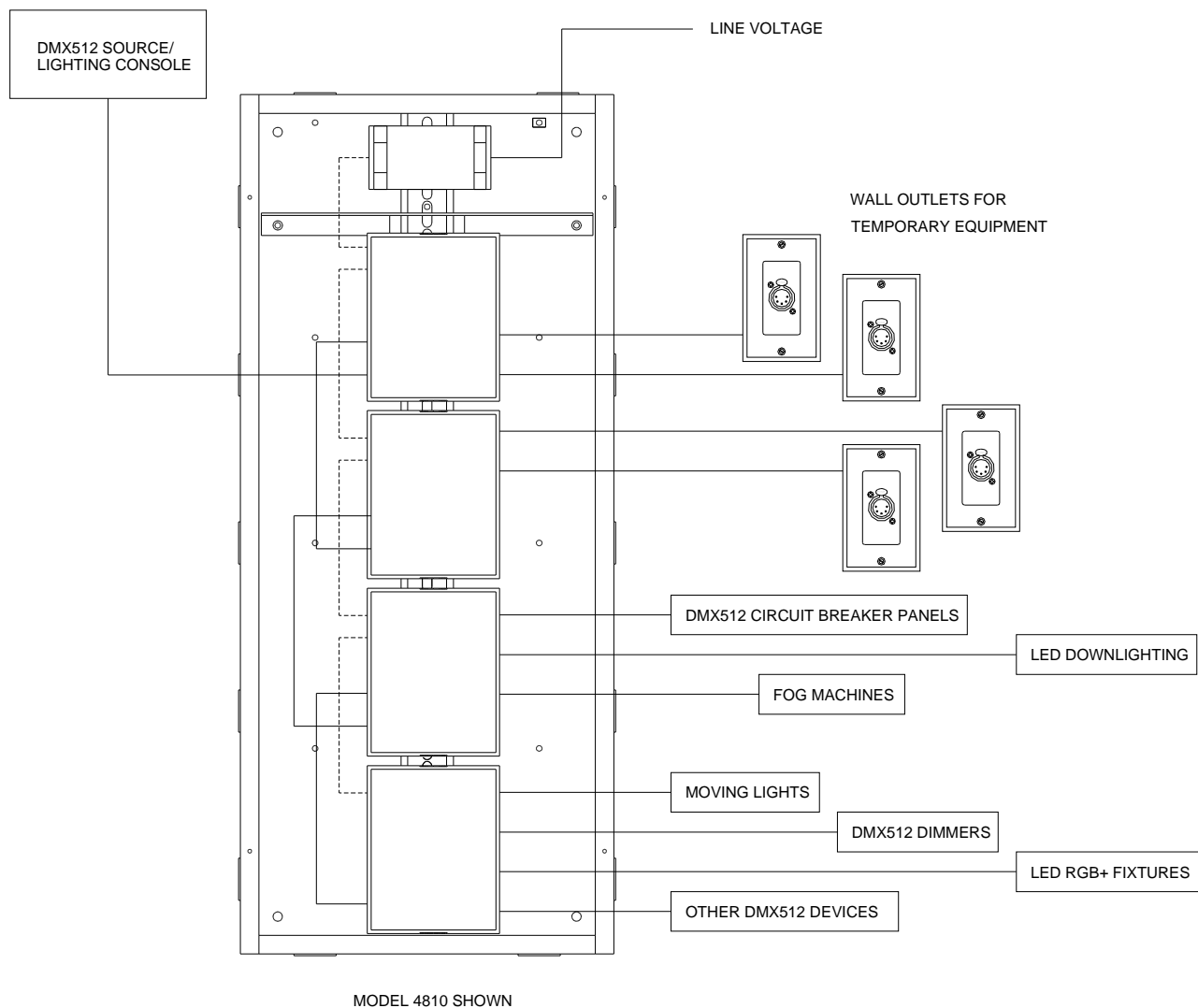
#4809



DMX512 PIN OUT

XLR PIN #	PURPOSE
1	Shield
2	Data - (complement)
3	Data + (true)
4	Data - (pair 2 complement)
5	Data + (pair 2 true)

APPLICATION RISER



ORDERING INFORMATION

PART #	DESCRIPTION
4807	eDIN Installation Repeater, 4-way
4808	eDIN Installation Repeater, 8-way
4809	eDIN Installation Repeater, 12-way
4810	eDIN Installation Repeater, 16-way