

# ARE YOU A LIGHTING NOMAD?

## SECRET WEAPON



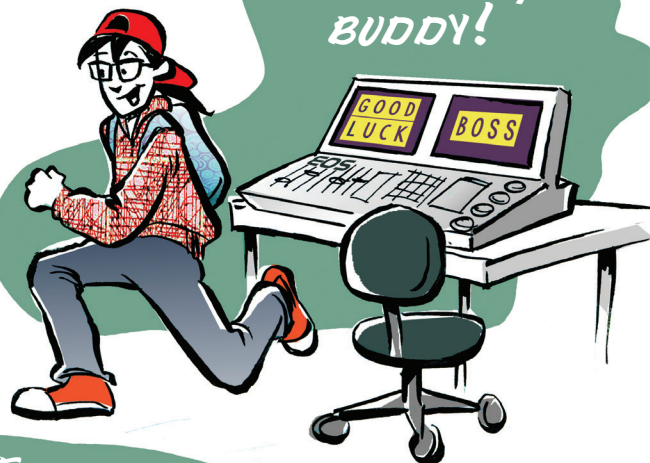
The pocket-sized ETCnomad is your key to convenient lighting control.

I'M  
ON  
IT!



Take your show on the road with ETCnomad™ control.

BACK SOON,  
BUDDY!



ETCnomad runs both Eos® and Cobalt® software, so it's like having two consoles in one.

## THE CLIENT'S GEAR



Don't want to be stuck with an in-house lighting relic? Run your show the way you want on your ETCnomad.

NO LUGGAGE?  
NO PROBLEM!



Can't take your trusted ETC console with you? Simply toss ETCnomad and your laptop into your carry-on and you're on your way.

Cramped quarters and a hectic schedule? ETCnomad fits right in.





ACTUAL SIZE

# ETCnomad™

## LIGHTING CONTROL WHEREVER YOU WANT TO GO

*Take your show on the road.* For the times you can't bring your console with you but don't want to be stuck lighting on an unfamiliar system, ETCnomad control is the answer. A device small enough to fit on your keychain, it connects to your computer and unlocks the power of both Cobalt and Eos/Element™ application software.

ETCnomad can be a primary controller, backup or client device and can run completely offline, and is compatible with both PCs and Macs. It comes in five output counts: ETCnomad 256 (1/2 universe), ETCnomad 512 (512 outputs), ETCnomad 1024 (1024 outputs) and ETCnomad 1536 (1536 outputs) – which can be field-upgraded without any hardware changes – and ETCnomad 2048 (2048 outputs). When used on a PC, ETCnomad can support a fader wing, and on both PC and Macs, it works with ETC remotes.

### ADDITIONAL FEATURES

Compatible with Microsoft Windows® 7, Windows 8 and Macintosh OS X Mavericks

Net3™/ACN/sACN and ArtNet output, DMX via ETC Gadget and DMX/RDM via Net3 Gateways

RFR, iRFR and aRFR supported

ETCnomad 256 replaces the Eos and Cobalt Client Software Kits



# ETCnomad Puck™

## ALL THE ADVANTAGES OF PC CONTROL. NONE OF THE RISK.

*Like a bodyguard for your show.* The ETCnomad Puck mini-computer is a secure device that allows you to program and run your shows without the worries that come with using a laptop. It only allows ETC applications to be downloaded, so it protects your files and prevents users from playing video games and browsing the Internet at inopportune times.

Like ETCnomad, ETCnomad Puck runs both Cobalt and Eos/Element software, and can serve as a primary, backup or client device or be used offline. It is also available in five field-upgradeable output counts: ETCnomad Puck 2048 (2048 outputs), ETCnomad Puck 1536 (1536 outputs), ETCnomad Puck 1024 (1024 outputs), ETCnomad 512 (512 outputs) and ETCnomad Puck 256 (half a universe). And you can use your favorite ETC accessories and fader wings with ETCnomad Puck.

### ADDITIONAL FEATURES

Three USB ports, one network port and two HDMI video outputs included

Net3/ACN/sACN and ArtNet output; DMX via ETC Gadget and DMX/RDM via Net3 Gateways

Net3 Show Control and I/O Gateways, OSC and UDP triggers

To find out if you're a lighting nomad, visit [www.etconnect.com](http://www.etconnect.com)



**Corporate Headquarters** ■ 3031 Pleasant View Rd, PO Box 620979, Middleton WI 53562 0979 USA ■ Tel +1 608 831 4116

**London, UK** ■ Unit 26-28, Victoria Industrial Estate, Victoria Road, London W3 6UU, UK ■ Tel +44 (0) 20 8896 1000

**Rome, IT** ■ Via Pieve Torina, 48, 00156 Rome, Italy ■ Tel +39 (06) 32 111 683

**Holzkirchen, DE** ■ Ohmstrasse 3, 83607 Holzkirchen, Germany ■ Tel +49 (80 24) 47 00-0

**Hong Kong** ■ Room 1801, 18/F, Tower 1 Phase 1, Enterprise Square, 9 Sheung Yuet Road, Kowloon Bay, Kowloon, Hong Kong ■ Tel +852 2799 1220

**Web** ■ [www.etconnect.com](http://www.etconnect.com) ■ Copyright©2015 ETC. All Rights Reserved. All product information and specifications subject to change. 4380L1003 Rev. C 05/15