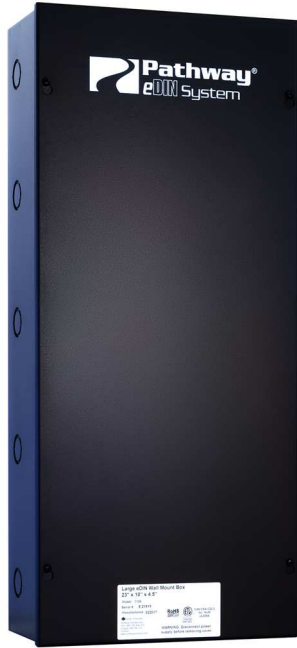


Job Name:	Catalog #:
Date:	Notes:

**LARGE eDIN SYSTEM ENCLOSURE WITH VERTICAL DIN RAIL**

# #1106



## PRODUCT OVERVIEW

The Pathway Connectivity 1106 eDIN Enclosure is an ETL-listed NEMA1 enclosure for eDIN modules and a power supply.

## FEATURES

- Contractor friendly, sturdy steel construction
- Conduit knockouts provided on all sides
- Logical arrangement makes wiring neat and easy
- Barriercd high-voltage section for power supplies (power supply not included)
- Internal DIN rail can be used to mount eDIN and other standard DIN rail modules
- Pre-installation service of eDIN modules and power supply available; local contractor only lands main power and data lines
- When eDIN Modules are factory-installed in a Pathway enclosure, assembly is ETL Listed

## SPECIFICATIONS

### WEIGHTS AND DIMENSIONS

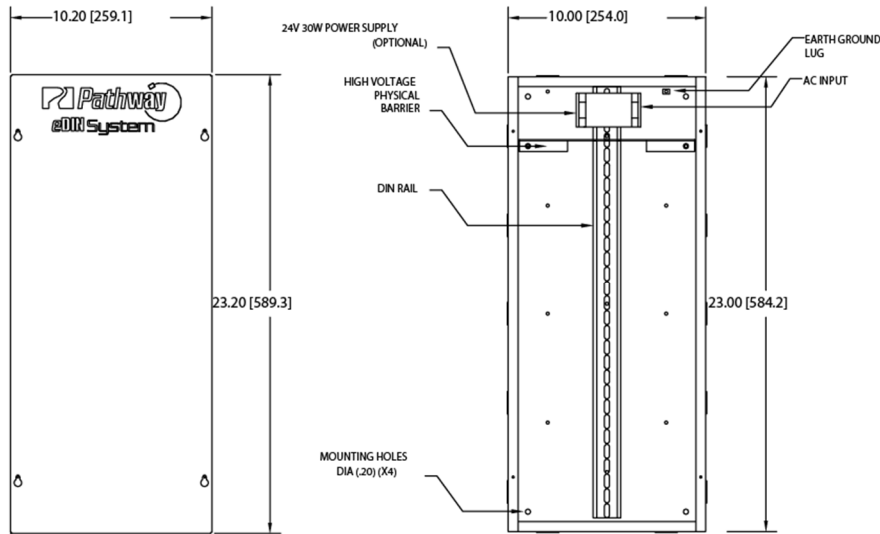
- 13.5 lbs (6 kg)
- 10.25"W x 23.25"H (260mm x 590mm)
- Depth: 4.5" (120mm)

### RAIL SPACE

- 1 x 19.5" (495mm) Vertical



## DIMENSIONS



## CREATING THE CONFIGURABLE PART NUMBER

Choose the required eDIN System Enclosure. Begin the part number with 49XX where XX is the last two digits of the eDIN System Enclosure part number. Follow this with the list of modules to be included in the enclosure. The first module will be designated with "M". Then add the power supply(ies). VIA5 Switches must be in a superior position. See the chart below. The logic of the construction results in part numbers like, **49XX-MXX-XX-XX-PXX** or **49XX-670X-MXX-PXX**.

The 1106 Large enclosure has 19.5" of vertical DIN rail space (495mm). **Choose up to four A-type, three B-type or 2 C-type modules**

### A-Type Modules (4.5" long, 115mm):

- #1002 1-in, 4-out DMX Repeater
- #1011 Pathport eDIN 1-port node
- #1012 Pathport eDIN 2-port node
- #1029 NFP+ Network Fade Processor

### B-Type Modules (6.25" long, 160mm):

- # 1004 16 channel DMX-to-Analog
- # 1006 24 channel Analog-to-DMX
- # 1009 1-in, 4-out DMX/RDM Splitter

### C-Type Modules (8" long, 200mm):

- #1003 12 channel Contact Closure
- #1008 6 channel LED Dimmer
- #1014 Pathport eDIN 4-port node
- #6705/6706 VIA5 Ethernet Switches

### Power Supplies:

- 1001-30 30 Watt, 24VDC Power Supply
- 700-7950 100 Watt, 48VDC Power Supply
- 1001-DC10 48VDC to 24VDC Converter, 10 Watts
- 1001-DC20 48VDC to 24VDC Converter, 20 Watts

Part Number	Configurable Code	Size Code
1105	4905	
1106	4906	
1107	4907	
1108	4908	
1109	4909	
1002	M02	A
1003	M03	C
1004	M04	B
1006	M06	B
1008	M08	C
1008-6A	M08.6	C
1009	M09	B

Part Number	Configurable Code	Size Code
1011	M11	A
1012	M12	A
1014	M14	C
1016	M16	C
1029	M29	A
6705	6705	C
6706	6706	C
1001-30	P01	
700-7950	P09	
1001-DC10	P11	
1001-DC20	P12	

## ORDERING INFORMATION

PART #	DESCRIPTION
1106	10" x 23" x 4.5" eDIN System Enclosure - One 19.5" (495mm) Vertical DIN Rail