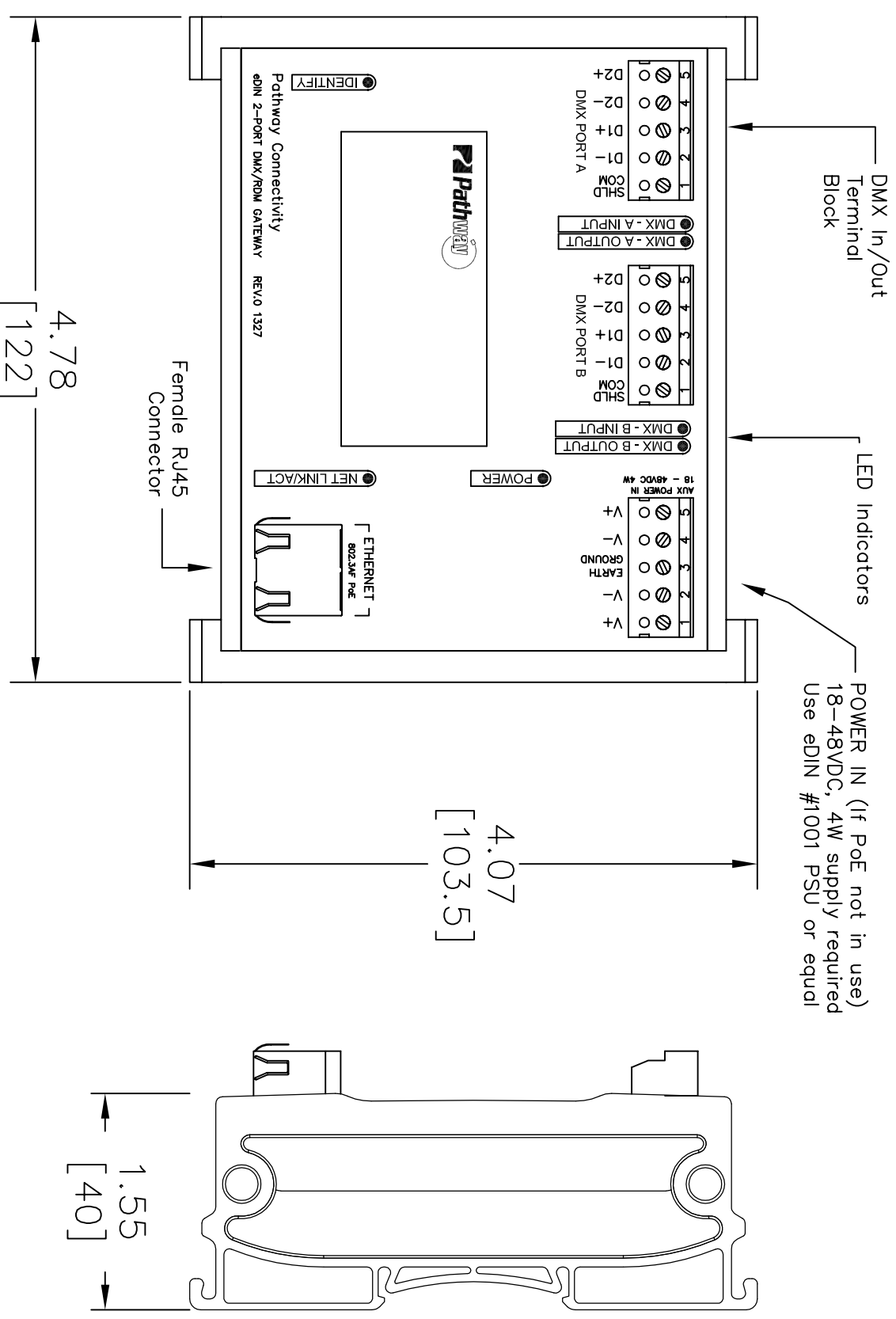


Cat5/Cat6 Pinout for DMX512-A		
DMX Signal	Cat5/6 Color & #	XLR Pin #
Data 1 +	1 - White/Orange	3
Data 1 -	2 - Orange	2
Data 2 +	3 - White/Green	5
Data 2 -	6 - Green	4
not used	4 - Blue	
not used	5 - White/Blue	
Shield/COM	7 - White/Brown	1
Shield/COM	8 - Brown	

Cat5/Cat6 Pinout for Color Kinetics		
DMX Signal	Cat5/6 Color & #	XLR Pin #
Data 1 -	1 - White/Orange	2
Data 1 +	2 - Orange	3
Shield/COM	3 - White/Green	1
not used	6 - Green	
not used	4 - Blue	
not used	5 - White/Blue	
not used	7 - White/Brown	
not used	8 - Brown	

**DMX CONNECTION LEGEND**

DMX Signal	Pin
SHLD/COM	1
D1-	2
D1+	3
D2- N/C	4
D2+ N/C	5



Fastening mechanism designed for 35 x 7.5mm DIN rail

**1012 - eDIN PATHPORT 2-Port**

FILENAME: 1012 -Pathport-eDIN-2-Port.dwg

PART NUMBER: 1012



**Pathway Connectivity**  
 103 Inglewood Plaza, 1439 17th Avenue SE  
 Calgary, Alberta, Canada T2G 1J9  
 Phone: +1(403)243-8110 Fax: +1(403)287-1281  
<http://www.pathwayconnect.com>

DRAWN BY: BRIAN F. EVANS  
 DATE: 11/20/2015  
 CHECKED: ROBERT ARMSTRONG  
 SCALE: NTS  
 UNITS: INCHES [mm]

REV **B**